



www.stromi-nn.ru

DESIGN AND PRODUCTION OF EQUIPMENT FOR LOADING AND UNLOADING OF RAW MATERIALS LIVE BINS



Contents:

Equipment for loading and unloading of raw materials live bins.....	2
Vibrating bottom VD.....	3
Hand sliding shutter ZSHR.....	5
Pneumatic sliding shutter ZSHP.....	7
Feeding devices UD.....	9
Feeding device UD75.....	9
Feeding device UD125.....	11
Feeding device UD200.....	13
Feeding device UD250.....	15
Feeding device UD315.....	16
Vibratory feeders.....	19
Vibratory feeder PV8-0,36/0,9.....	19
Vibratory feeder PV8-0,5/1,2.....	21
Vibratory feeder PV15-0,5/1,2.....	23
Vibratory feeder PV8-0,5/1,6.....	25
Vibratory feeder PV8-0,5/1,9.....	27
Vibratory feeder PV8-0,8/1,8.....	29
Piped Vibratory feeders PV-0,21.....	31
Piped Vibratory feeders PV-0,335.....	33
Two-way diverters.....	35
Two-way diverters PR-400.....	35
Two-way diverters PR-500.....	37
Two-way diverters PR-500LF.....	39
Pneumatic activators.....	41
Pneumatic activator PP-40.....	41
Pneumatic activator PP-63.....	43
Pneumatic hammer PM-125.....	45

EQUIPMENT FOR LOADING AND UNLOADING OF RAW MATERIALS LIVE BINS

“Stromizmeritel” produces wide range of equipment for loading hoppers, using to keep row materials. This equipment provide distribution of raw materials in storage volume, partial or complete covering of exit area, transportation of row materials from hopper to transport equipment or other reservoirs.

The specialists of company introduce and develop two-way diverter with pneumatic drive to change the direction of row materials flow during filling its storage volume. Such hammer are issued in two variants: general industrial and abrasion-resistant, so it is suitable for glass mixture.

“Stromizmeritel” manufactures hand and pneumatic sliding shutters. It is used to cover exit area of hoppers during remedial maintenance or for portioned delivery of material from hopper.

There are several methods to receive problem of losing material. One of them is to install on the lower part of the hopper vibrating bottom with unbalanced mass vibration generator. The other one is by means of pneumatic hammers, located on cone part of hopper.

Screw and vibratory feeders can realize batch routing. Type of feeder depends on type and fractional makeup of transported material. All feeders are made of watertight housing. Union flanges with packing washers provide lack of dusty materials emission in mating area with other equipment.

VIBRATING BOTTOM

VD

APPLICATION

Vibrating bottom VD is used for shaking row powder dusty fine material with abrasiveness no more than "C" class. Such vibrating bottom is suitable for row materials up to 3 mm and humidity no more than 1%, particles density 2,5 g/sm³, which do not cake during its dosing and transportation from hoppers. Also vibrating bottom is used to eliminate arching and losing material in measuring hopper in industrial premises at an ambient temperature of +5 to +40°C.

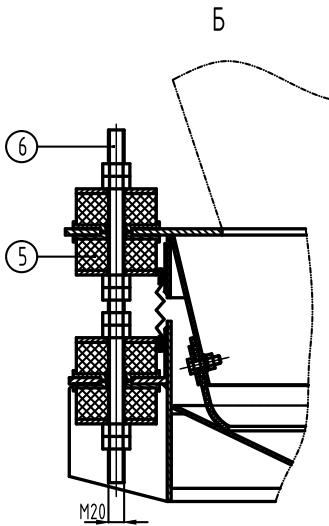
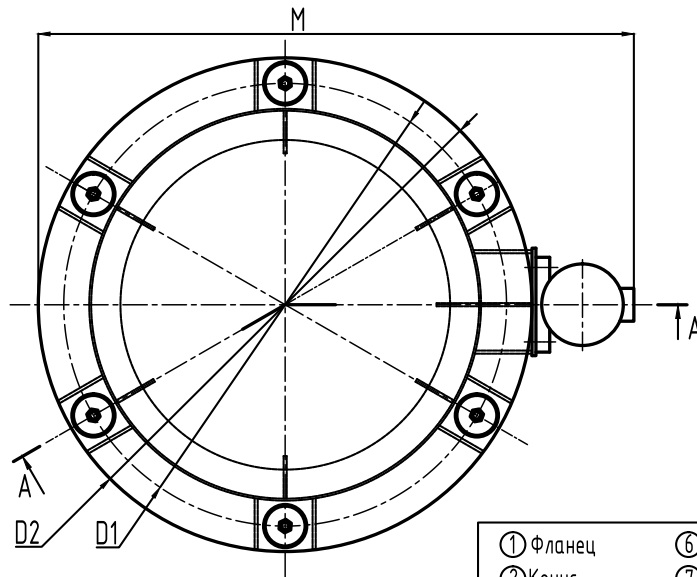
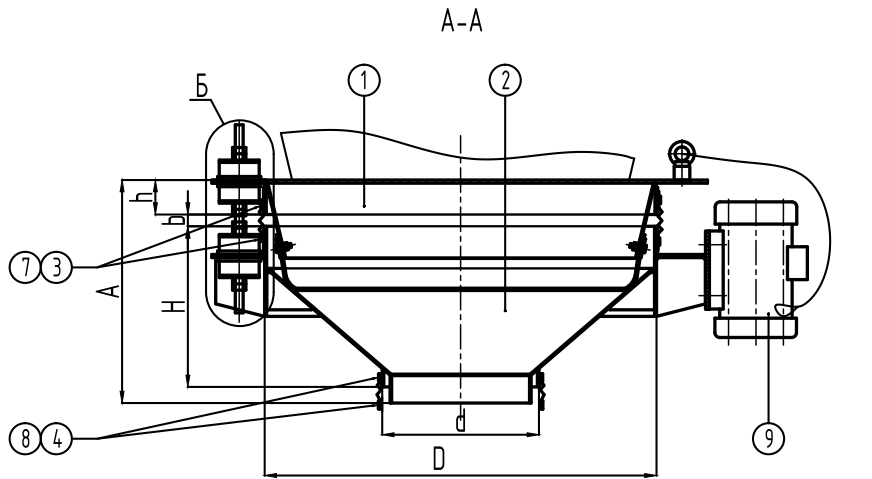
BASIC TECHNICAL SPECIFICATIONS

Parameters	Nominal values		
	VD-1	VD-3	VD-6
Volume, m ³	0,48	0,35	0,7
Entrance course diameter, mm	1500	1000	2200
Power supply voltage V	380±38		
Current frequency Hz	50±1		
Power, kW, max	0,55		
Weight, kg, max	270	200	315
Dimensions mm	See picture		

STROMIZMERITEL

34-A, Sovnarkomovskaya Str., Nizhny Novgorod, 603086, Russia
 Phone./Fax: +7 (831) 435-13-70, 8 (800) 550-59-70. E-mail: stromizmeritel@rambler.ru

Виброднище ВД



- | | |
|---------------|--------------------------|
| ① Фланец | ⑥ Шпилька |
| ② Конус | ⑦ Рукав |
| ③ Хомут | ⑧ Рукав |
| ④ Хомут | ⑨ Мотор-вибратор ИВ-104Б |
| ⑤ Амортизатор | |

Наименование	Размеры, мм								
	D	d	H	h	A	b	D1	D2	M
ВД-1	1500	400	410	88	570	30	1130	1260	1520
ВД-3	1000		410		570		1630	1760	1955
ВД-6	2200		594		753		2340	2480	2676

STROMIZMERITEL

34-A, Sovnarkomovskaya Str., Nizhny Novgorod, 603086, Russia
 Phone./Fax: +7 (831) 435-13-70, 8 (800) 550-59-70. E-mail: stromizmeritel@rambler.ru

www.stromi-nn.ru

HAND SLIDING SHUTTER

ZSHR

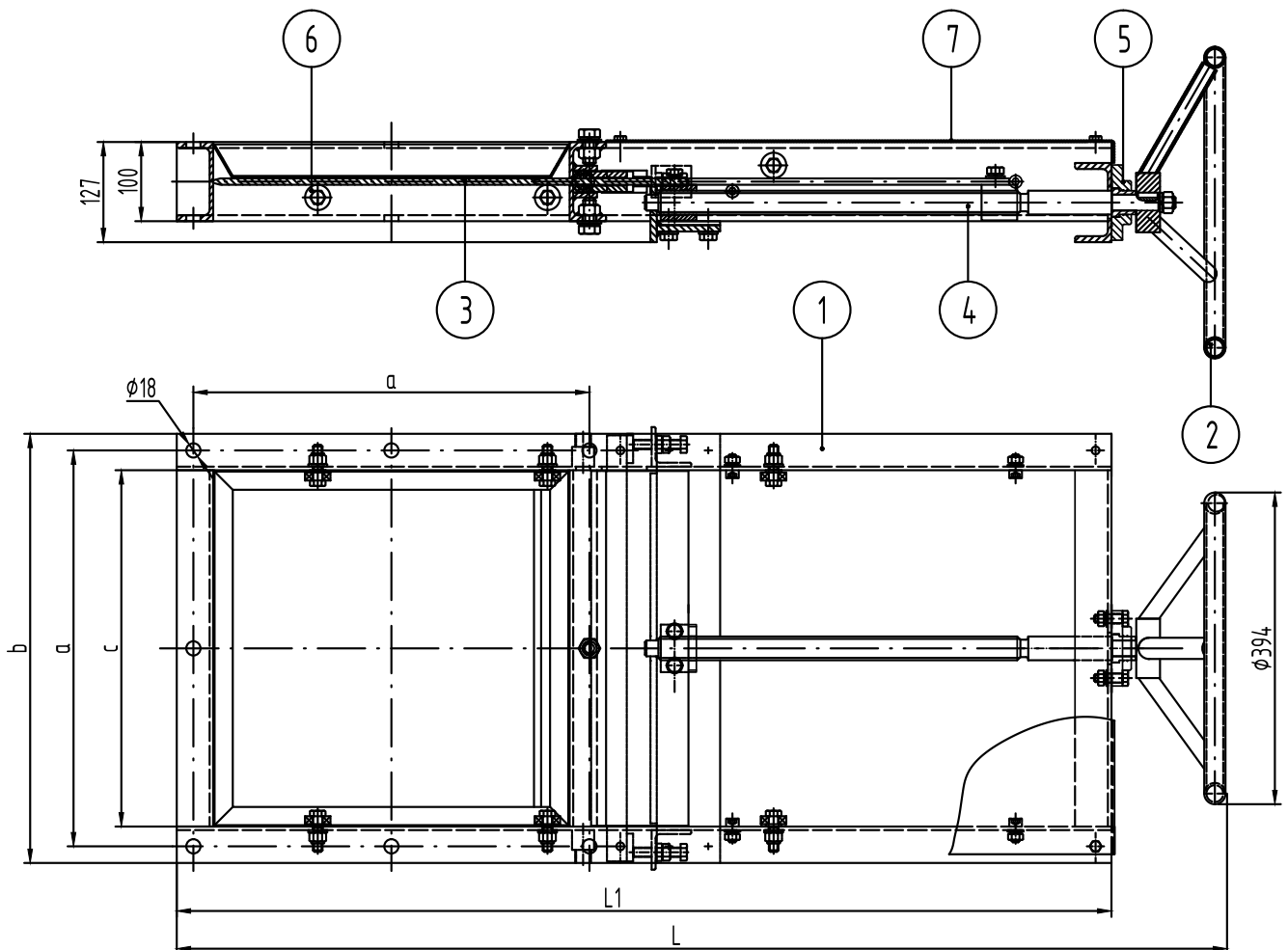
APPLICATION

Hand sliding shutter is used for opening, closing, or partially covering of discharge mouth of row materials hopper.

BASIC TECHNICAL SPECIFICATIONS

Parameters	Nominal values		
	ZSHR-300	ZSHR-400	ZSHR-500
Nominalbore, mm	300x300	400x400	500x500
Handling	hand		
Position control of sliding part	visual		
Weight, kg, max	38	54	81
Temperature °C	-30... +40		

Затвор шиберный ЗШР



Наименование	Размеры, мм				
	a	b	c	L	L1
ЗШР-300	400	442	350	1124	980
ЗШР-400	500	542	450	1325	1180
ЗШР-500	580	622	530	1421	1260

- | | |
|--------------------|---------------------|
| ① Корпус | ⑤ Фланец упорный |
| ② Штурвал | ⑥ Подшипник опорный |
| ③ Полотно шиберное | ⑦ Крышка |
| ④ Винт ходовой | |

STROMIZMERITEL

34-A, Sovnarkomovskaya Str., Nizhny Novgorod, 603086, Russia
 Phone./Fax: +7 (831) 435-13-70, 8 (800) 550-59-70. E-mail: stromizmeritel@rambler.ru

СТРОМИ
 www.stromi-nn.ru

PNEUMATIC SLIDING SHUTTER

ZSHP

APPLICATION

Pneumatic sliding shutter is used for opening, closing, or partially covering of discharge mouth of row materials hopper and also for installation of transport and technological equipment.

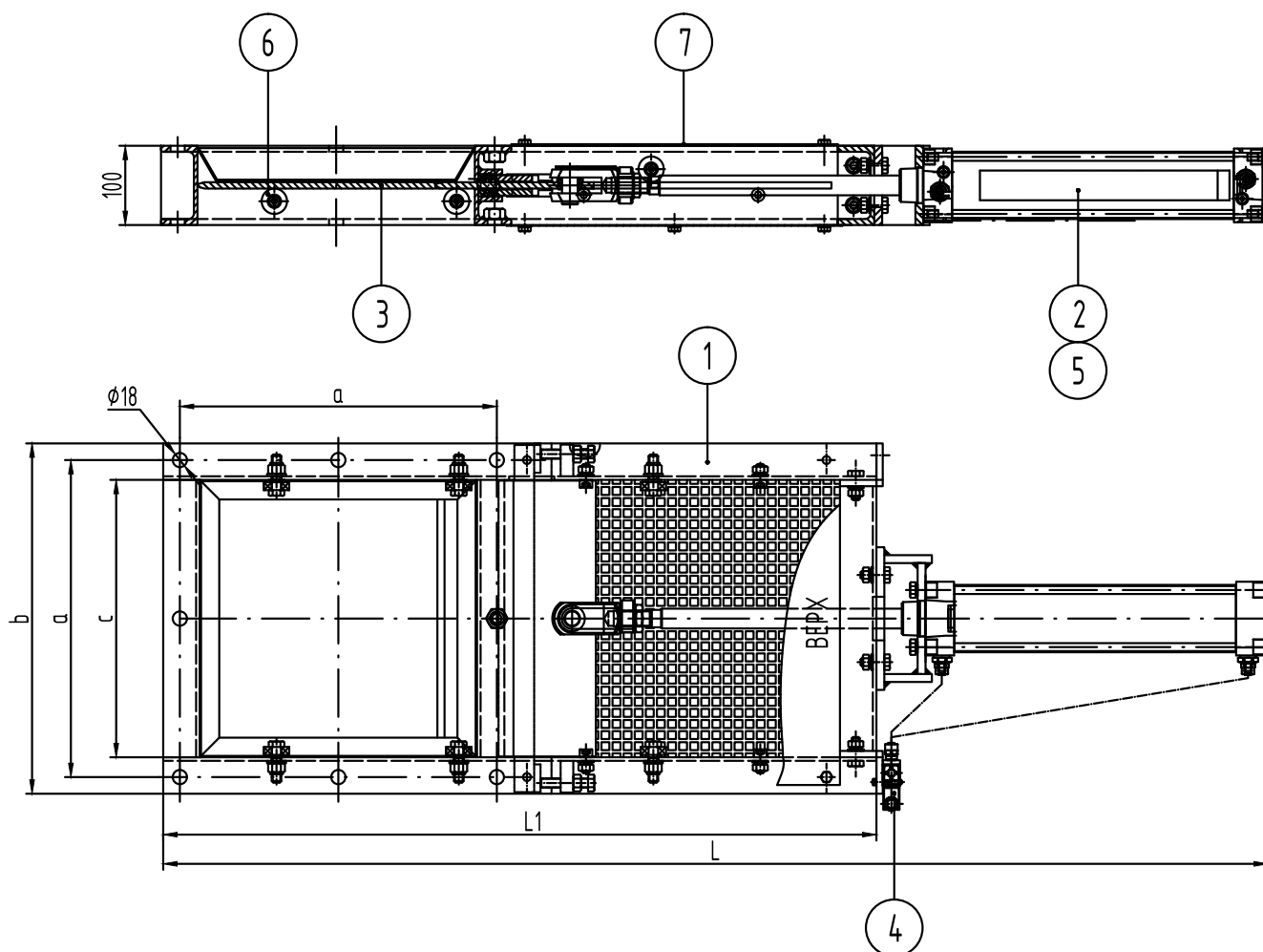
Work conditions:

- ambient temperature, °C (K).....+5 ...+40 (278-313)
- relative air humidity, %.....90 (при t=25 °C)
- atmosphere pressure, kPa (mm Hg),.....84-106,7 (630-800).

BASIC TECHNICAL SPECIFICATIONS

Parameters	Nominal values	
	ZSHP-300	ZSHP-400
Nominal bore mm	300x300	400x400
Handling	Electro pneumatic	
Position control of sliding part	«close-open»	
Pneumatic feeding from power network with pressure Mpa	0,5±0,1	
Air output m ³ /min	0,898	1,050
Volume of air during one cycle of operation m ³	0,015	0,031
Requirements for cleaning and drying stored air to GOST17433-80, class	7	
Pneumatic piston diameter mm	80	100
Cylinder rod stroke mm	300	400
Electric feeding from AC network with voltage V	220 ±22	
Protection degree of electrical equipment	IP54	
Power, W	7,5	
Weight, kg, max	33	55

Затвор шиберный ЗШП



Наименование	Размеры, мм				
	a	b	c	L	L1
ЗШП-300	400	442	350	1394	900
ЗШП-400	500	542	450	1709	1100

- | | |
|------------------------|---------------------|
| ① Корпус | ⑤ Датчики концевые |
| ② Пневмоцилиндр | ⑥ Подшипник опорный |
| ③ Полотно шиберное | ⑦ Крышка |
| ④ Пневмораспределитель | |

STROMIZMERITEL

34-A, Sovnarkomovskaya Str., Nizhny Novgorod, 603086, Russia
 Phone./Fax: +7 (831) 435-13-70, 8 (800) 550-59-70. E-mail: stromizmeritel@rambler.ru

СТРОМИ
 www.stromi-nn.ru

FEEDING DEVICE

UD75

APPLICATION

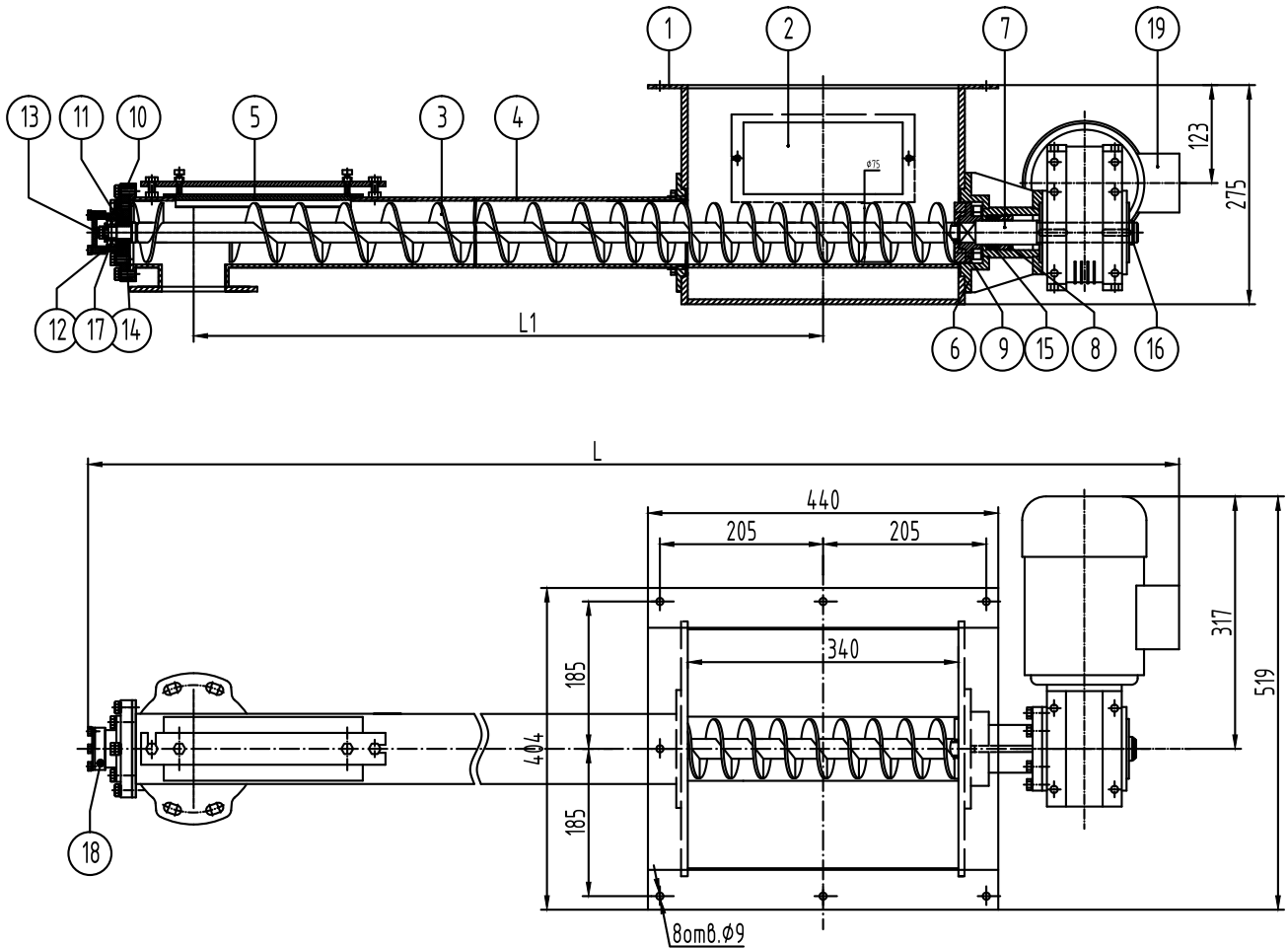
Feeding device UD75 is designed for supply of dosing component from measuring hopper to dosing complex hopper or other reservoir or transporter equipment with specified productivity.

Transport materials: dusty powder fine-grained non-caking and non-sticking materials with mesh size up to 3 mm with bulk density up 2,5 g/sm³.

BASIC TECHNICAL SPECIFICATION

Parameters	Nominal values
Full diameter of sc rew, mm	75
Transporting length (on loading and unloading axes), mm	See Picture
Number of screw pitch	1
Gear motor type	UD-RV-63-20-70-1,1-B14-B3
Rotation frequency of screw , rpm	70
Rotation frequency of electric motor , rpm	1400
Transmission ratio of gear motor , i	20
Output, m ³ /h	0,7
Screw carriage design	with variable pitch of screw
IP code of the electric motor	IP55
Electric power supply voltage , V	380±38
Rated power , kW	1,1
Weight, kg	See picture

Устройство питающее UD75 [СМ1.034.033]



Обозначение	Размеры, мм		Масса, кг
	L	L1	
СМ1.034.033	1374,5	800	67,0
-01	1524,5	950	69,2
-02	1674,5	1100	71,4
-03	1824,5	1250	73,6
-04	1974,5	1400	75,8
-05	2124,5	1550	78,0
-06	2274,5	1700	80,2
-07	2424,5	1850	82,4
-08	2574,5	2000	84,6

- | | |
|---------------------|---------------------|
| ① Корпус | ⑪ Втулка |
| ② Крышка | ⑫ Корпус |
| ③ Шнек | ⑬ Крышка |
| ④ Труба | ⑭ Кольцо СП 37-23-5 |
| ⑤ Крышка | ⑮ Кольцо СП 42-29-5 |
| ⑥ стакан | ⑯ Кольцо В25 |
| ⑦ Вал промежуточный | ⑰ Подшипник 1202 |
| ⑧ Крышка | ⑱ Масленка |
| ⑨ Втулка | ⑲ Мотор-редуктор |
| ⑩ Фланец | |

FEEDING DEVICE

UD125

APPLICATION

Feeding device UD125 is designed for supply of dosing component from measuring hopper to dosing complex hopper or other reservoir or transporter equipment with specified productivity.

Transport materials: dusty powder fine-grained non-caking and non-sticking materials with mesh size up to 3 mm with bulk density up to 2,5 g/sm³.

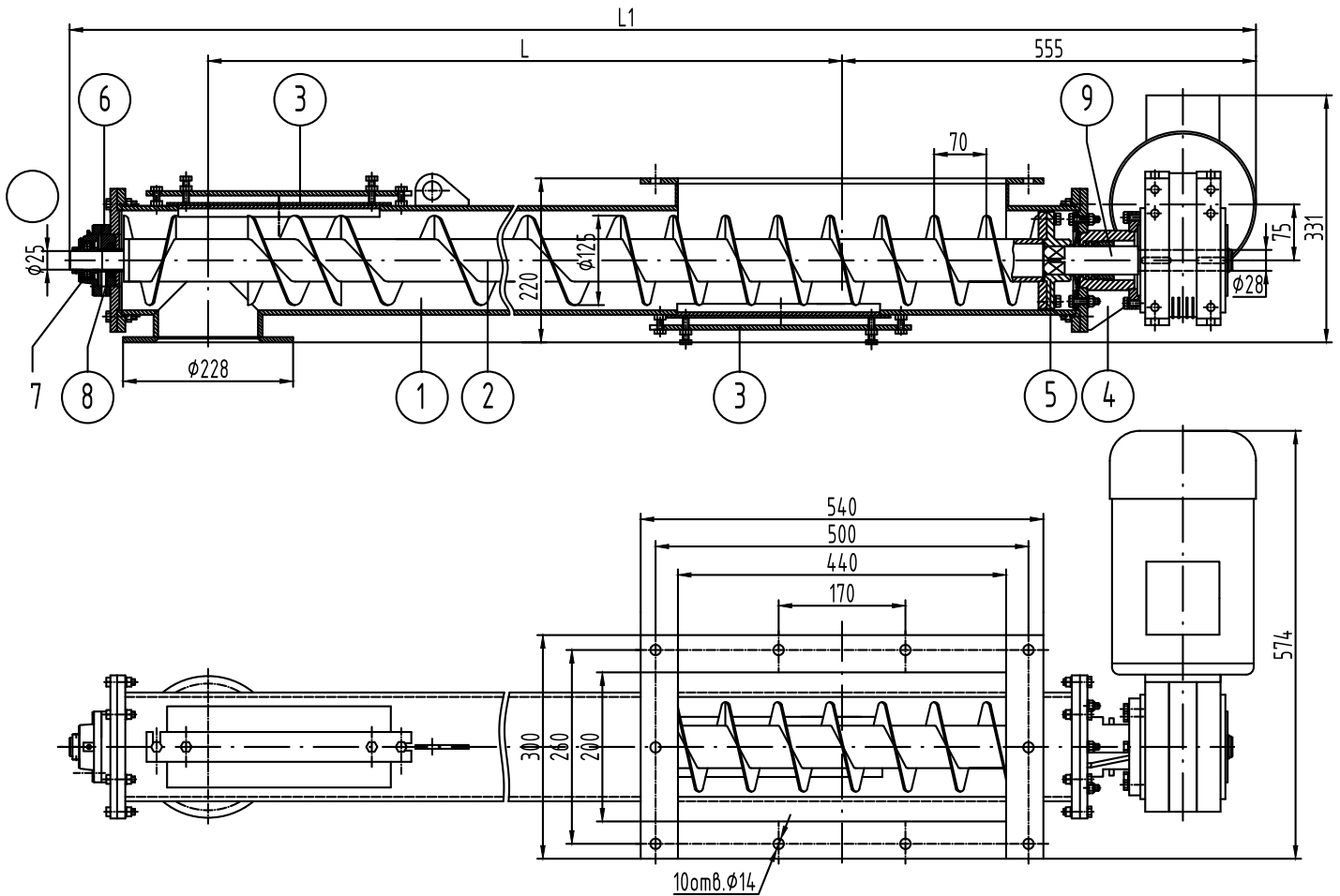
BASIC TECHNICAL SPECIFICATIONS

Parameters	Nominal values
Full diameter of screw , mm	125
Transporting length (on loading and unloading axes), mm	See Picture
Number of screw pitch	1
Gear motor type	UD-RV-075-20-70-2,2-B14-B3
Rotation frequency of screw , rpm	70
Rotation frequency of electric motor , rpm	1410
Transmission ratio of gear motor , i	20
Output, m ³ /h	3,28
Screw carriage design	with variable pitch of screw
IP code of the electric motor	IP55
Electric power supply voltage , V	380±38
Rated power , kW	2,2
Weight, kg	See picture

STROMIZMERITEL

34-A, Sovnarkomovskaya Str., Nizhny Novgorod, 603086, Russia
 Phone./Fax: +7 (831) 435-13-70, 8 (800) 550-59-70. E-mail: stromizmeritel@rambler.ru

Устройство питающее UD 125 [СМ1.034.000]



Обозначение	Размеры, мм		Масса, кг
	L	L1	
СМ1.034.000	600	1341	85
-01	850	1591	95
-02	1100	1841	105
-03	1350	2091	115
-04	1600	2341	125
-05	1850	2591	135
-06	2100	2841	145
-07	2350	3091	155
-08	2600	3341	165
-09	2850	3591	175

- | | |
|----------------|----------------------|
| ① Корпус | ⑥ Фланец |
| ② Шнек | ⑦ Узел подшипниковый |
| ③ Крышка | ⑧ Манжета |
| ④ Узел привода | ⑨ Вал промежуточный |
| ⑤ Втулка | |

STROMIZMERITEL

34-A, Sovnarkomovskaya Str., Nizhny Novgorod, 603086, Russia
 Phone./Fax: +7 (831) 435-13-70, 8 (800) 550-59-70. E-mail: stromizmeritel@rambler.ru

СТРОМИ
 www.stromi-nn.ru

FEEDING DEVICE

UD200

APPLICATION

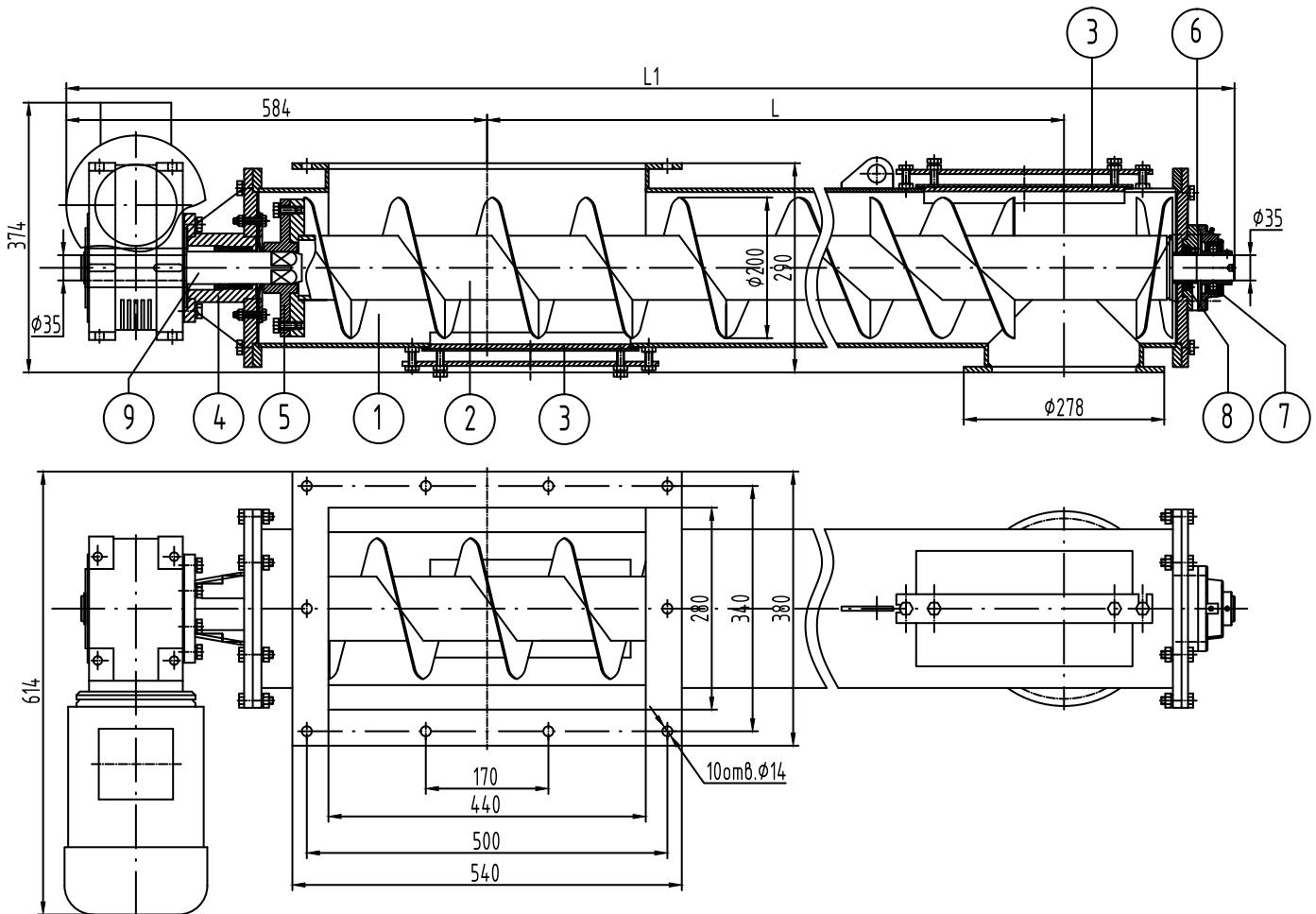
Feeding device UD200 is designed for supply of dosing component from measuring hopper to dosing complex hopper or other reservoir or transporter equipment with specified productivity.

Transport materials: dusty powder fine-grained non-caking and non-sticking materials with mesh size up to 3 mm with bulk density up 2,5 g/sm³.

BASIC TECHNICAL SPECIFICATIONS

Parameters	Nominal values
Full diameter of screw , mm	200
Transporting length (on loading and unloading axes), mm	See Picture
Number of screw pitch	1
Gear motor type	UD-RV-090-20-70-3,0-B14-B3
Rotation frequency of screw , rpm	70
Rotation frequency of electric motor , rpm	1410
Transmission ratio of gear motor , i	20
Output, m ³ /h	13,88
Screw carriage design	with variable pitch of screw
IP code of the electric motor	IP55
Electric power supply voltage , V	380±38
Rated power , kW	3,0
Weight , kg	See picture

Устройство питающее UD 200 [СМ1.034.120]



Обозначение	Размеры, мм		Масса, кг
	L	L1	
СМ1.034.120	800	1618	191
-01	1000	1818	202
-02	1200	2018	212
-03	1400	2218	223
-04	1600	2418	234
-05	1800	2618	245
-06	2000	2818	256
-07	2200	3018	267
-08	2400	3218	278
-09	2600	3418	288
-10	2800	3618	299
-11	3000	3818	310

- | | |
|----------------|----------------------|
| ① Корпус | ⑥ Фланец |
| ② Шнек | ⑦ Узел подшипниковый |
| ③ Крышка | ⑧ Манжета |
| ④ Узел привода | ⑨ Вал промежуточный |
| ⑤ Втулка | |

FEEDING DEVICE

UD250

APPLICATION

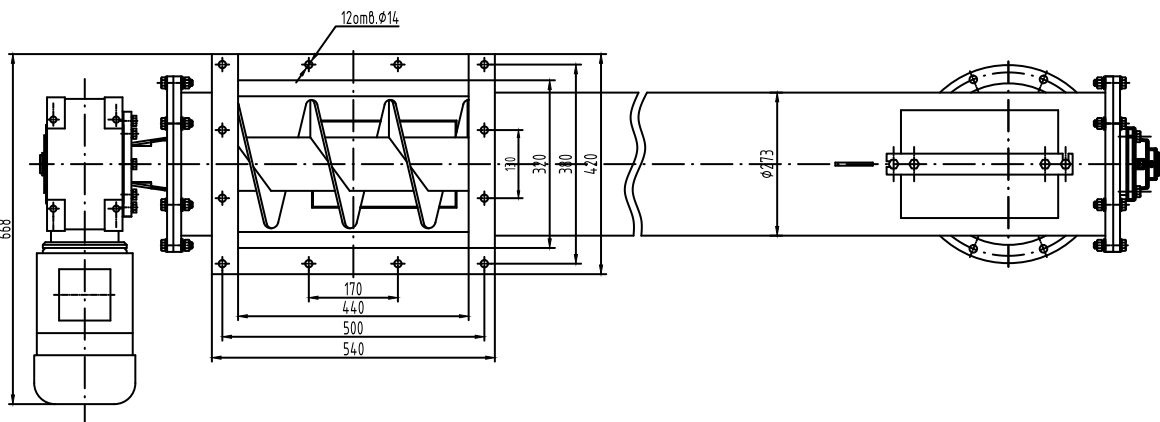
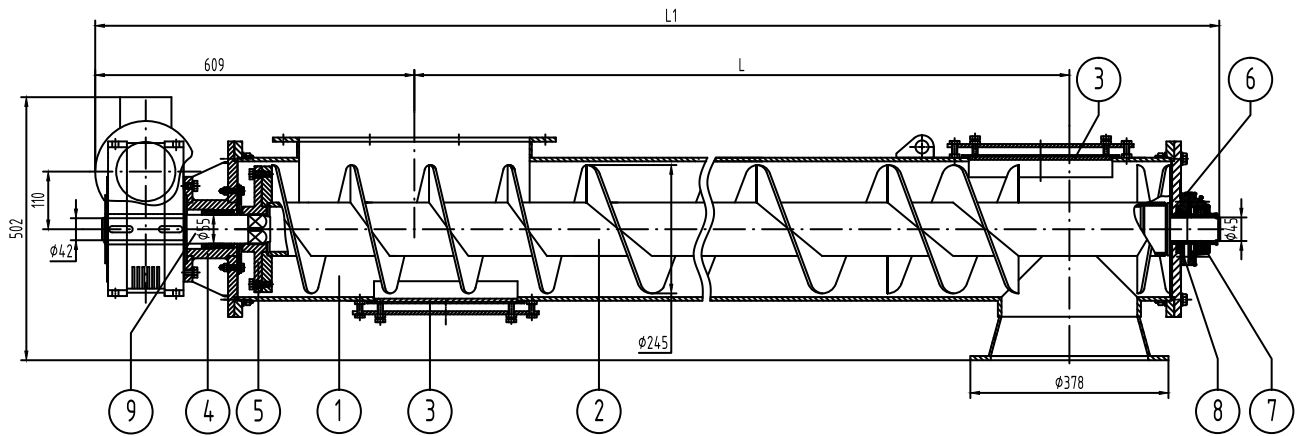
Feeding device UD250 is designed for supply of dosing component from measuring hopper to dosing complex hopper or other reservoir or transporter equipment with specified productivity.

Transport materials: dusty powder fine-grained non-caking and non-sticking materials with mesh size up to 3 mm with bulk density up to 2,5 g/sm³.

BASIC TECHNICAL SPECIFICATIONS

Parameters	Nominal values
Full diameter of screw , mm	250
Transporting length (on loading and unloading axes), mm	See Picture
Number of screw pitch	1
Gear motor type	UD-RV-110-20-70-4,0-B14-B3
Rotation frequency of screw , rpm	70
Rotation frequency of electric motor , rpm	1410
Transmission ratio of gear motor , i	20
Output, m ³ /h	24,67
Screw carriage design	with variable pitch of screw
IP code of the electric motor	IP55
Electric power supply voltage , V	380±38
Rated power , kW	4,0
Weight, kg	See picture

Устройство питающее UD 250 [СМ1.034.930]



Обозначение	L, мм	L1, мм	Масса, кг
СМ1.034.930	750	1645	300
-01	1000	1895	319
-02	1250	2145	338
-03	1500	2395	357
-04	1750	2645	378
-05	2000	2895	397
-06	2250	3145	418
-07	2500	3395	437
-08	2750	3645	457
-09	3000	3895	477

- | | |
|----------------|----------------------|
| 1 Корпус | 6 Фланец |
| 2 Шнек | 7 Узел подшипниковый |
| 3 Крышка | 8 Манжета |
| 4 Узел привода | 9 Вал промежуточный |
| 5 Втулка | |

FEEDING DEVICE

UD315

APPLICATION

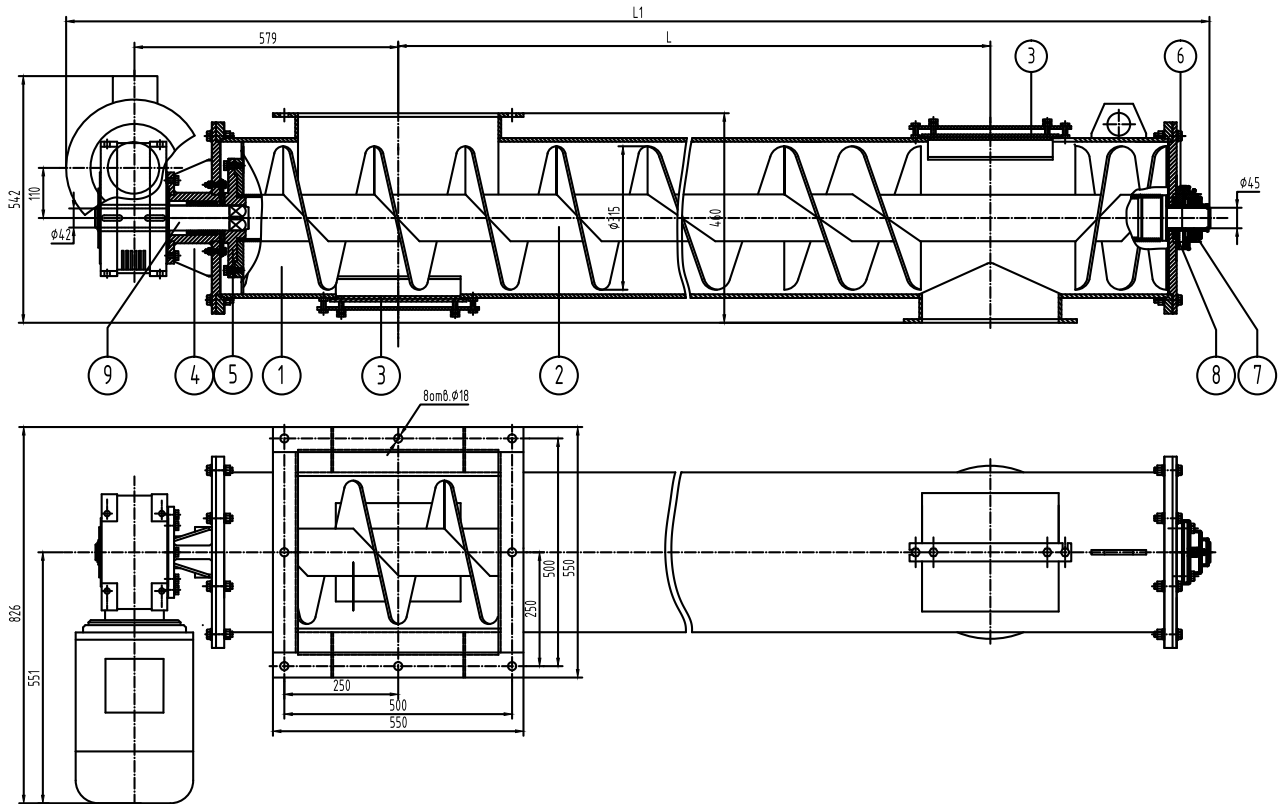
Feeding device UD315 is designed for supply of dosing component from measuring hopper to dosing complex hopper or other reservoir or transporter equipment with specified productivity.

Transport materials: dusty powder fine-grained non-caking and non-sticking materials with mesh size up to 3 mm with bulk density up to 2,5 g/sm³.

BASIC TECHNICAL SPECIFICATIONS

Parameters	Nominal values
Full diameter of screw , mm	315
Transporting length (on loading and unloading axes) , mm	See Picture
Number of screw pitch	1
Gear motor type	UD-RV-110-20-70-5,5-B14-B3
Rotation frequency of screw , rpm	70
Rotation frequency of electric motor , rpm	1410
Transmission ratio of gear motor , i	20
Output, m ³ /h	53,7
Screw carriage design	with variable pitch of screw
IP code of the electric motor	IP55
Electric power supply voltage , V	380±38
Rated power , kW	5,5
Weight, kg	See picture

Устройство питающее UD 315 [СМ1.035.000]



Обозначение	Размеры, мм		Масса, кг
	L	L1	
СМ1.035.000	1000	2210	296
-01	1600	2810	359
-02	2200	3410	422
-03	2800	4010	485
-04	3400	4610	548
-05	4000	5210	611
-06	1300	2510	327
-07	1900	3110	390
-08	2500	3710	453
-09	3100	4310	516
-10	3700	4910	579

- | | |
|----------------|----------------------|
| ① Корпус | ⑥ Фланец |
| ② Шнек | ⑦ Узел подшипниковый |
| ③ Крышка | ⑧ Манжета |
| ④ Узел привода | ⑨ Вал промежуточный |
| ⑤ Втулка | |

STROMIZMERITEL

34-A, Sovnarkomovskaya Str., Nizhny Novgorod, 603086, Russia
 Phone./Fax: +7 (831) 435-13-70, 8 (800) 550-59-70. E-mail: stromizmeritel@rambler.ru

VIBRATORY FEEDER

PV8-0,36/0,9

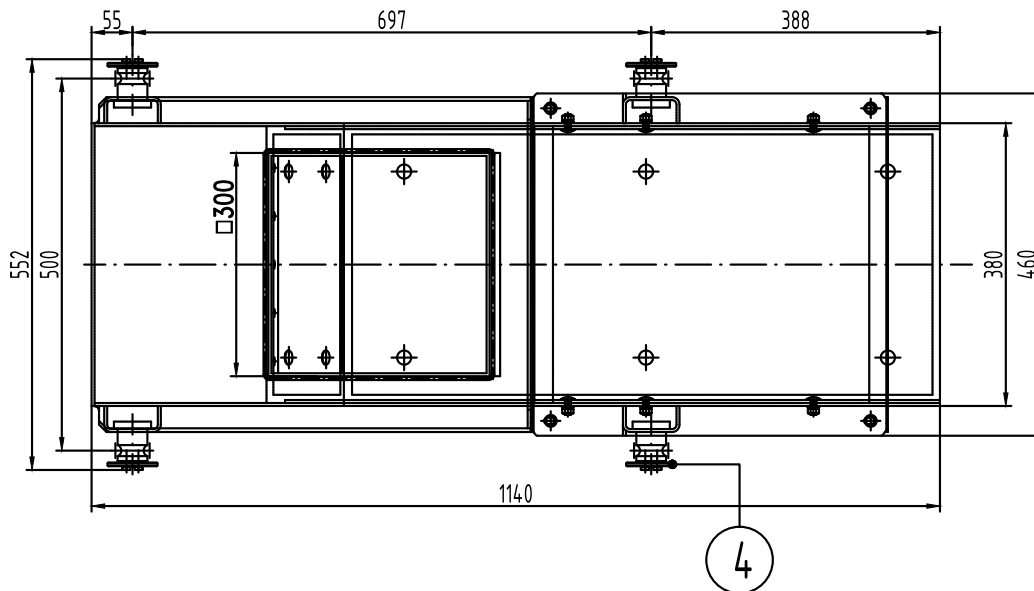
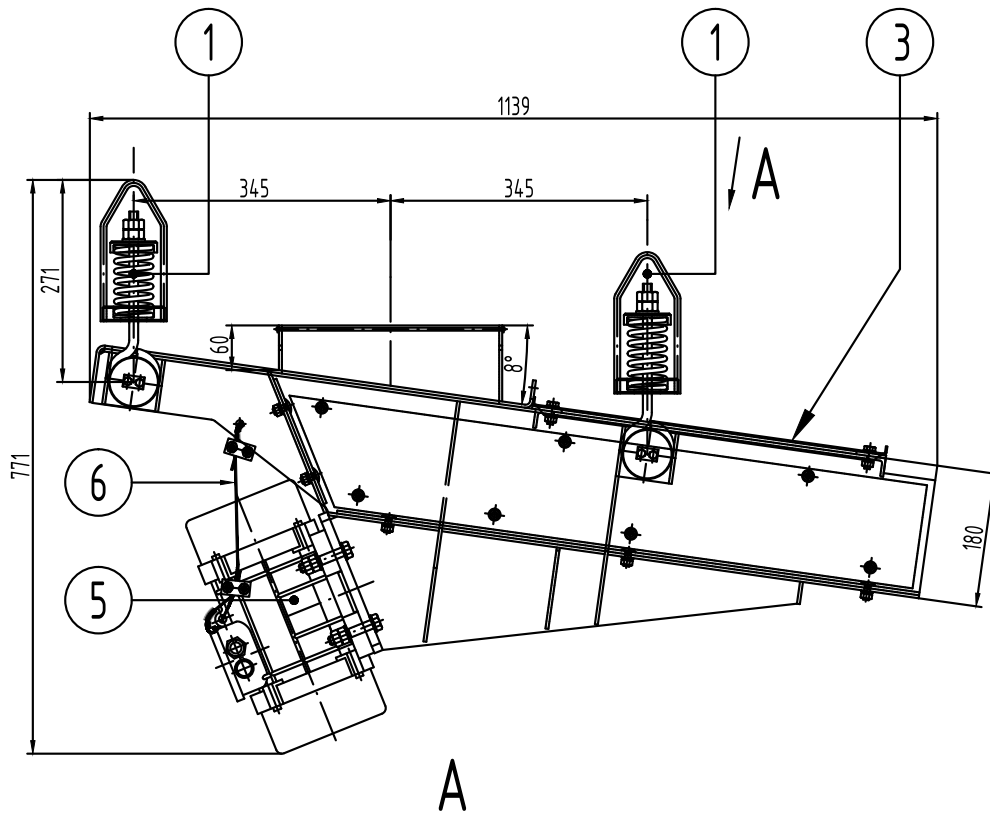
APPLICATION

Vibratory feeder is designed for supply of free-flowing fine-grained and lump non-caking and non-sticking materials with mesh size up to 20 mm with bulk density up to 2 g/sm³ in workshops at environmental air temperature of -30° to +50°.

BASIC TECHNICAL SPECIFICATIONS

Parameters	Nominal values
Width of vibratory chute , mm	364
Height of vibratory chute , mm	147
Dimensions of loading part	300x300
Inclination of vibratory chute in relation to horizontal level, deg.	8
Power supply voltage, V	380±38
Output (in sand $\rho=1,5\tau/\text{m}^3$), m ³ /h with installation of balance weight on 60 (80)%	20(30)
Vibrator , type	MVE 400/15
Rated input , kW	0,6
Weight of vibratory feeder , kg	125

Питатель вибрационный ПВ8-0,36/0,9



- | | |
|-------------------------|---|
| ① Подвеска | ⑤ Вибратор электромеханический 50Hz ЗРН |
| ② Корпус | МВЕ 400/15 230/400V |
| ③ Крышка | ⑥ Канат страховочный |
| ④ Шайба ограничительная | |

STROMIZMERITEL

34-A, Sovnarkomovskaya Str., Nizhny Novgorod, 603086, Russia
 Phone./Fax: +7 (831) 435-13-70, 8 (800) 550-59-70. E-mail: stromizmeritel@rambler.ru

VIBRATORY FEEDER

PV8-0,5/1,2

APPLICATION

Vibratory feeder of PV series is designed for supply of free-flowing fine-grained and lump non-caking and non-sticking materials with mesh size up to 20 mm with bulk density up to 2 g/sm³ in workshops at environmental air temperature of -30° to +50°.

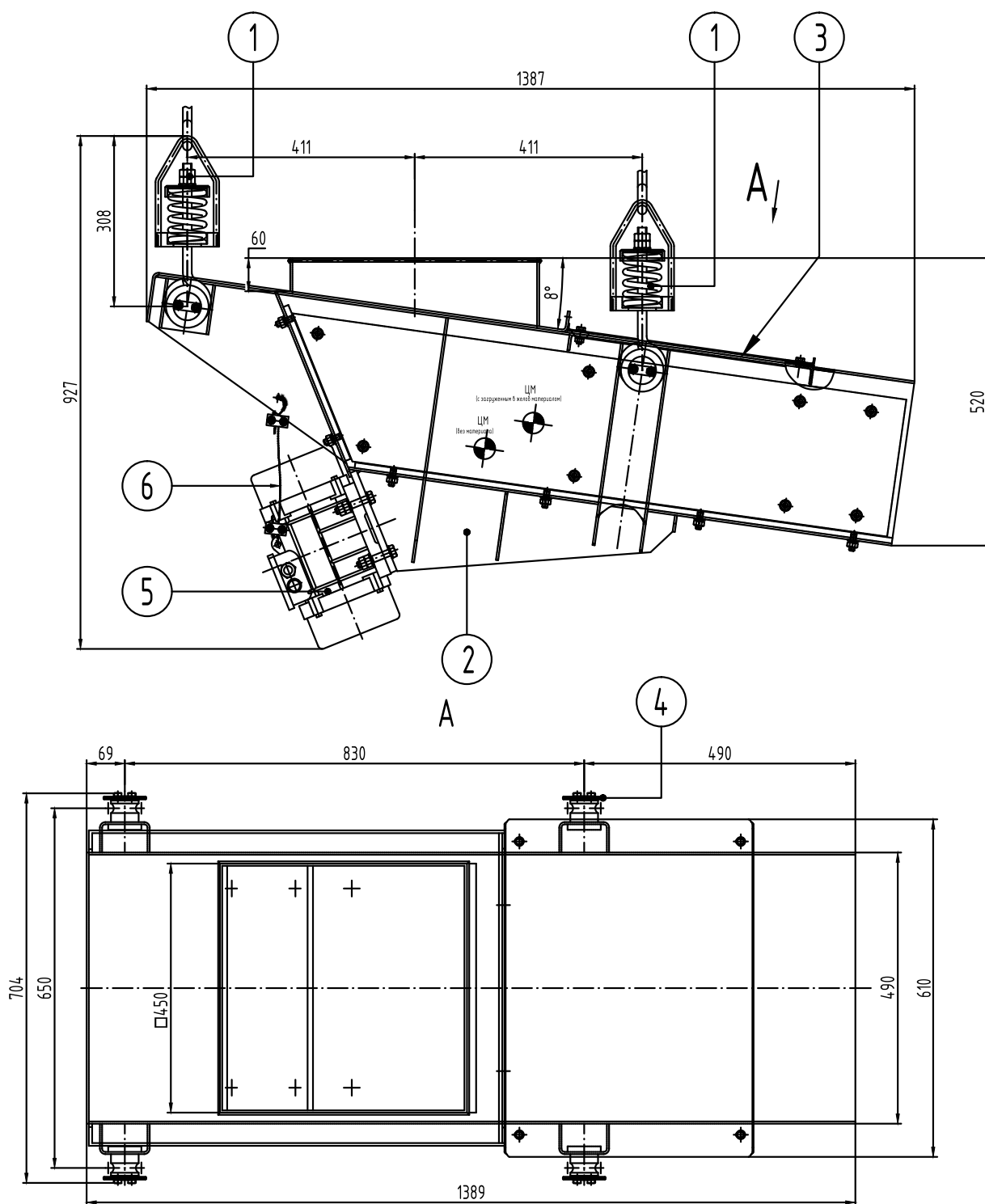
BASIC TECHNICAL SPECIFICATIONS

Parameters	Nominal values
Width of vibratory chute , mm	474
Height of vibratory chute , mm	260
Dimensions of loading part	450x450
Inclination of vibratory chute in relation to horizontal level, deg.	8
Power supply voltage , V	380±38
Output (in sand $\rho=1,5\tau/\text{m}^3$), m ³ /h with installation of balance weight on 60 (80)%	36(48)
Vibrator , type	MVE 500/3
Rated input , kW	1,0
Weight of vibratory feeder , kg	177

STROMIZMERITEL

34-A, Sovnarkomovskaya Str., Nizhny Novgorod, 603086, Russia
 Phone./Fax: +7 (831) 435-13-70, 8 (800) 550-59-70. E-mail: stromizmeritel@rambler.ru

Питатель вибрационный ПВ8-0,5/1,2



- | | |
|-------------------------|---|
| ① Подвеска | ⑤ Вибратор электромеханический 50Hz 3PH
MVE 500/3 230/400V |
| ② Корпус | ⑥ Канат страховочный |
| ③ Крышка | |
| ④ Шайба ограничительная | |

STROMIZMERITEL

34-A, Sovnarkomovskaya Str., Nizhny Novgorod, 603086, Russia
 Phone./Fax: +7 (831) 435-13-70, 8 (800) 550-59-70. E-mail: stromizmeritel@rambler.ru

СТРОМИ
 www.stromi-nn.ru

VIBRATORY FEEDER

PV15-0,5/1,2

APPLICATION

Vibratory feeder of PV series is designed for supply of free-flowing fine-grained and lump non-caking and non-sticking materials with mesh size up to 20 mm with bulk density up to 2 g/sm³ in workshops at environmental air temperature of -30° to +50°.

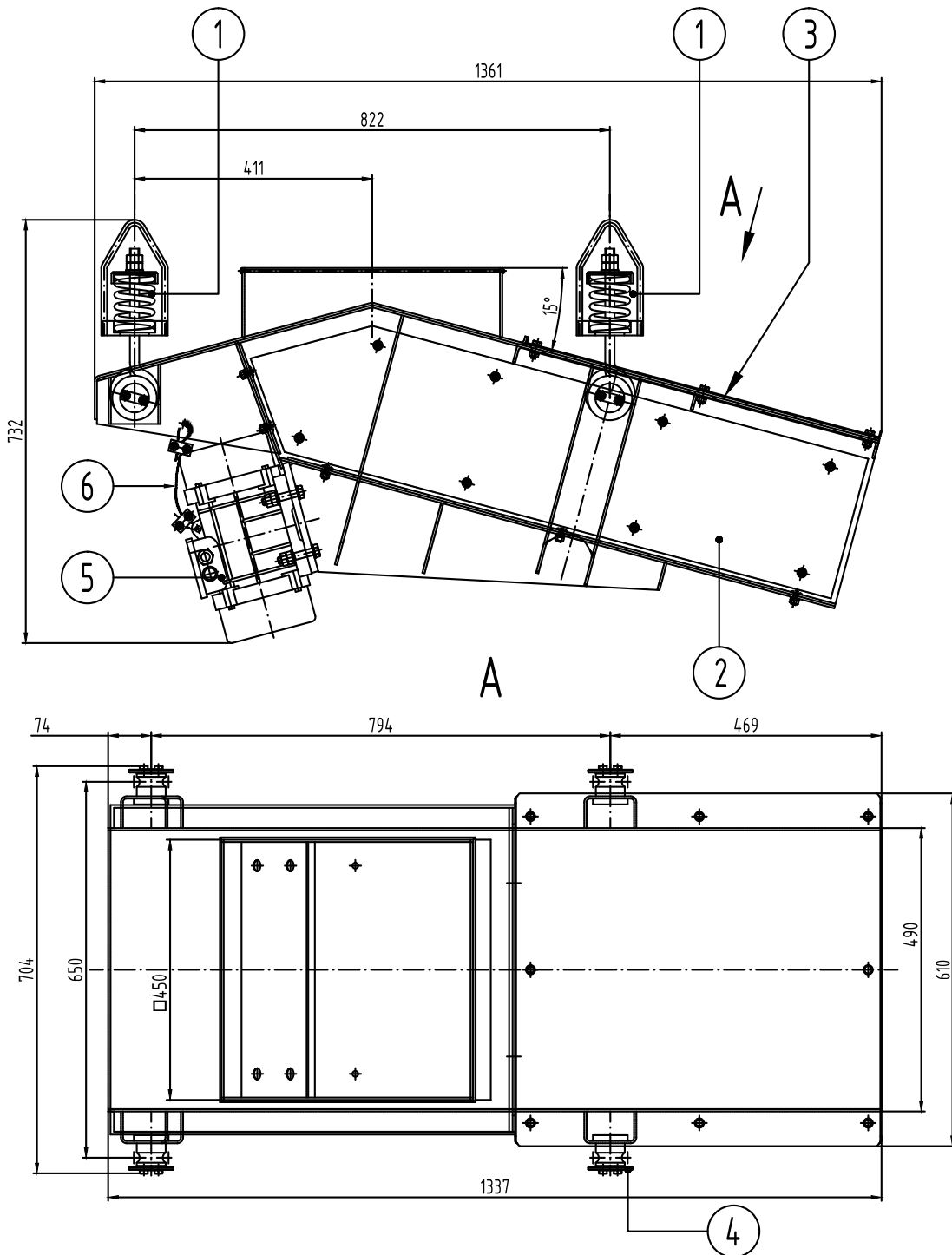
BASIC TECHNICAL SPECIFICATIONS

Parameters	Nominal values
Width of vibratory chute , mm	474
Height of vibratory chute , mm	260
Dimensions of loading part	450x450
Inclination of vibratory chute in relation to horizontal level, deg.	15
Power supply voltage , V	380±38
Output (in sand $\rho=1,5\tau/\text{M}^3$), m ³ /h with installation of balance weight on 60 (80)%	36(48)
Vibrator, type	MVE 500/3
Rated input , kW	1,0
Weight of vibratory feeder , kg	177

STROMIZMERITEL

34-A, Sovnarkomovskaya Str., Nizhny Novgorod, 603086, Russia
 Phone./Fax: +7 (831) 435-13-70, 8 (800) 550-59-70. E-mail: stromizmeritel@rambler.ru

Питатель вибрационный ПВ15-0,5/1,2



- | | |
|-------------------------|---|
| ① Подвеска | ⑤ Вибратор электромеханический 50Hz ЗРН
MVE 500/3 230/400V |
| ② Корпус | ⑥ Канат страховочный |
| ③ Крышка | |
| ④ Шайба ограничительная | |

STROMIZMERITEL

34-A, Sovnarkomovskaya Str., Nizhny Novgorod, 603086, Russia
 Phone./Fax: +7 (831) 435-13-70, 8 (800) 550-59-70. E-mail: stromizmeritel@rambler.ru

СТРОМИ
 www.stromi-nn.ru

VIBRATORY FEEDER

PV8-0,5/1,6

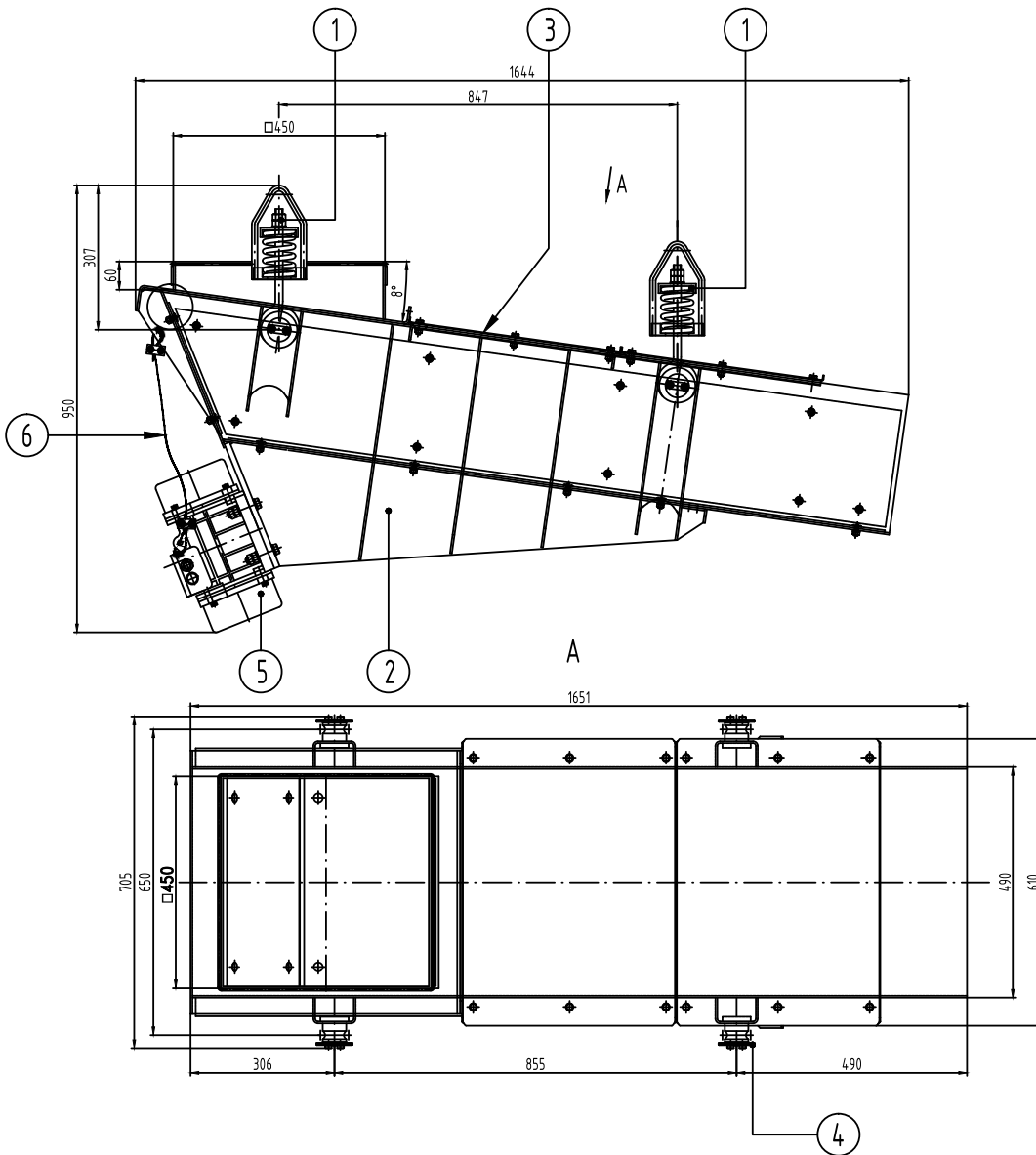
APPLICATION

Vibratory feeder of PV series is designed for supply of free-flowing fine-grained and lump non-caking and non-sticking materials with mesh size up to 20 mm with bulk density up to 2 g/sm³ in workshops at environmental air temperature of -30° to +50°.

BASIC TECHNICAL SPECIFICATIONS

Parameters	Nominal values
Width of vibratory chute , mm	474
Height of vibratory chute , mm	260
Dimensions of loading part	450x450
Inclination of vibratory chute in relation to horizontal level, deg.	8
Power supply voltage , V	380±38
Output (in sand $\rho=1,5\tau/\text{m}^3$), m ³ /h with installation of balance weight on 60 (80)%	30(40)
Vibrator , type	MVE 500/3
Rated input , kW	1,0
Weight of vibratory feeder , kg	177

Питатель вибрационный ПВ8-0,5/1,6



- | | |
|---|---|
| ① | Подвеска |
| ② | Корпус |
| ③ | Крышка |
| ④ | Шайба ограничительная |
| ⑤ | Вибратор электромеханический 50Hz ЗРН
MVE 500/3 230/400V |
| ⑥ | Канат страховочный |

STROMIZMERITEL

34-A, Sovnarkomovskaya Str., Nizhny Novgorod, 603086, Russia
 Phone./Fax: +7 (831) 435-13-70, 8 (800) 550-59-70. E-mail: stromizmeritel@rambler.ru

VIBRATORY FEEDER

PV8-0,5/1,9

APPLICATION

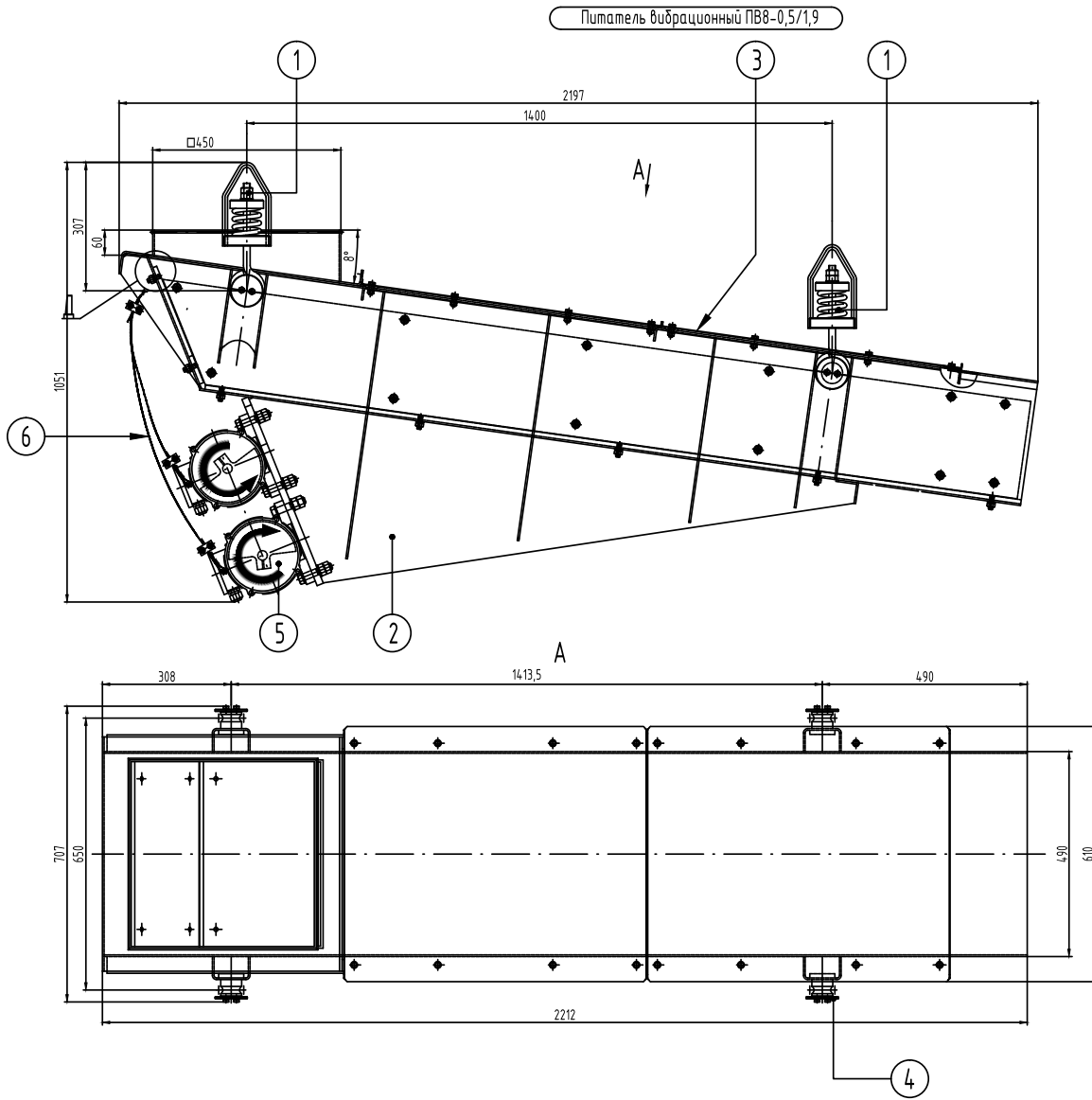
Vibratory feeder of PV series is designed for supply of free-flowing fine-grained and lump non-caking and non-sticking materials with mesh size up to 20 mm with bulk density up to 2 g/sm³ in workshops at environmental air temperature of -30° to +50°.

BASIC TECHNICAL SPECIFICATIONS

Parameters	Nominal values
Width of vibratory chute , mm	474
Height of vibratory chute , mm	260
Dimensions of loading part	450x450
Inclination of vibratory chute in relation to horizontal level, deg.	8
Power supply voltage , V	380±38
Output (in sand $\rho=1,5\tau/\text{M}^3$), m ³ /h with installation of balance weight on 60 (80)%	30(40)
Vibrator, type	MVE 1200/3
Rated input , kW	1,9
Weight of vibratory feeder , kg	300

STROMIZMERITEL

34-A, Sovnarkomovskaya Str., Nizhny Novgorod, 603086, Russia
 Phone./Fax: +7 (831) 435-13-70, 8 (800) 550-59-70. E-mail: stromizmeritel@rambler.ru



- | | |
|---|--|
| ① | Подвеска |
| ② | Корпус |
| ③ | Крышка |
| ④ | Шайба ограничительная |
| ⑤ | Вибратор электрохимический 50Hz 3PH
MVE 1200/3 230/400V |
| ⑥ | Канат страховочный |

STROMIZMERITEL

34-A, Sovnarkomovskaya Str., Nizhny Novgorod, 603086, Russia
Phone./Fax: +7 (831) 435-13-70, 8 (800) 550-59-70. E-mail: stromizmeritel@rambler.ru

VIBRATORY FEEDER

PV8-0,8/1,8

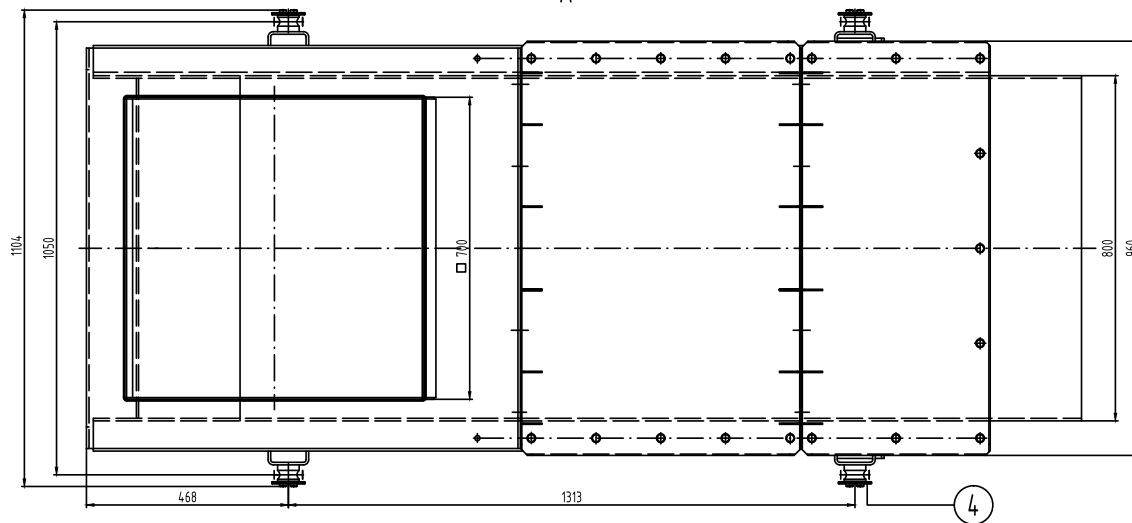
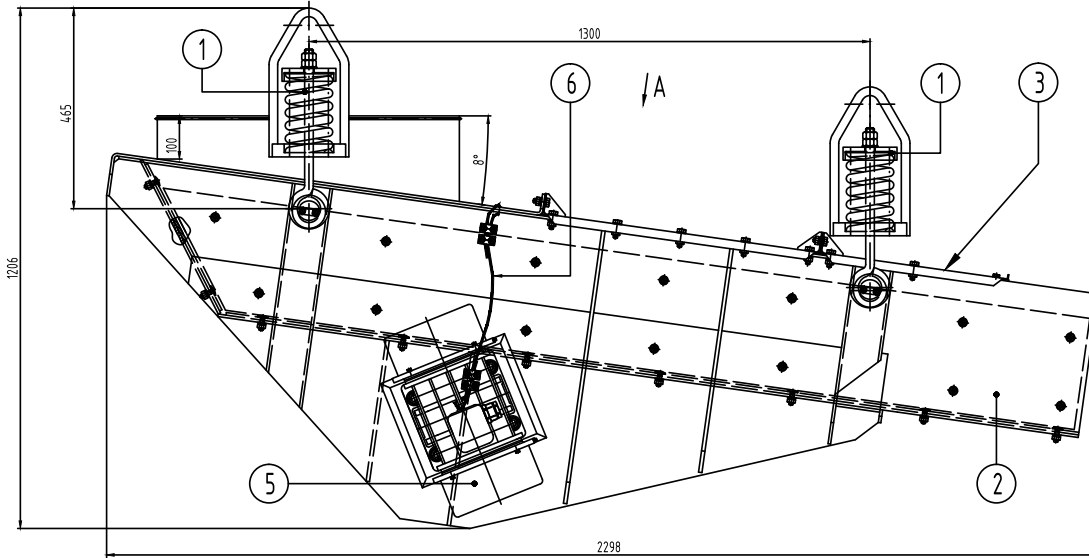
APPLICATION

Vibratory feeder of PV series is designed for supply of free-flowing fine-grained and lump non-caking and non-sticking materials with mesh size up to 20 mm with bulk density up to 2 g/sm³ in workshops at environmental air temperature of -30° to +50°.

BASIC TECHNICAL SPECIFICATIONS

Parameters	Nominal values
Width of vibratory chute , mm	780
Height of vibratory chute , mm	274
Dimensions of loading part	700x700
Inclination of vibratory chute in relation to horizontal level, deg.	8
Power supply voltage , V	380±38
Output (in sand $\rho=1,5\tau/\text{m}^3$), m ³ /h with installation of balance weight on 60 (80)%	64(80)
Vibrator, type	MVE 2300/3
Rated input , kW	4,8
Weight of vibratory feeder , kg	700

Питатель вибрационный ПВВ-0,8/1,8



- | | |
|---|--|
| ① | Подвеска |
| ② | Корпус |
| ③ | Крышка |
| ④ | Шайба ограничительная |
| ⑤ | Вибратор электрохимический
50Hz ЗРН MVE 2300/3 230/400V |
| ⑥ | Канат страховочный |

STROMIZMERITEL

34-A, Sovnarkomovskaya Str., Nizhny Novgorod, 603086, Russia
 Phone./Fax: +7 (831) 435-13-70, 8 (800) 550-59-70. E-mail: stromizmeritel@rambler.ru

PIPED VIBRATORY FEEDER

PV – 0,21

APPLICATION

Vibratory feeder of PV series is designed for supply of free-flowing fine-grained and lump non-caking and non-sticking materials with mesh size up to 20 mm with bulk density up to 2 g/sm³ in workshops at environmental air temperature of -30° to +50°.

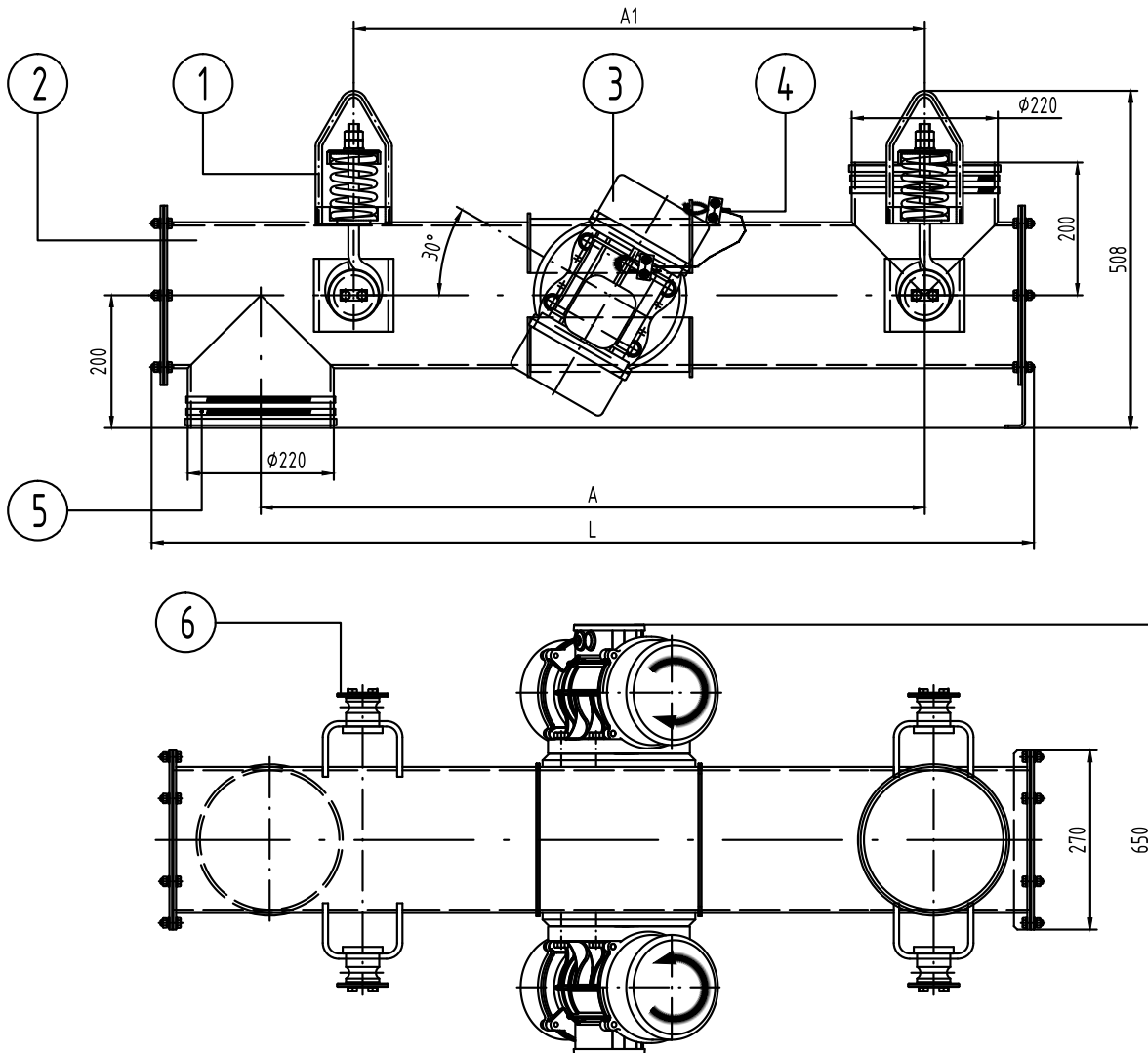
BASIC TECHNICAL SPECIFICATIONS

Parameters	Nominal values		
	PV-0,21/1,0	PV-0,21/1,3	PV-0,21/1,6
Conveying pipe inner diameter , mm	210		
Spacing between centers of loading and unloading part , mm	1000	1300	1600
Output (in sand $\gamma=1,5\tau/\text{m}^3$), m ³ /h with installation of balance weight on 80%	20		
Electromechanical vibrator type, V	MVE 400/15 "OLI" Wamgroup 50Hz, 3 stage, 1500 rotations/min		
Power supply voltage , V	380±38		
Number of vibrators	2		
Rated input, kW	2*0,3		
Dimensions (LxWxH), mm	1330*650*508	1630*650*508	1930*650*508
Weight, kg, max	122	130	138

STROMIZMERITEL

34-A, Sovnarkomovskaya Str., Nizhny Novgorod, 603086, Russia
Phone./Fax: +7 (831) 435-13-70, 8 (800) 550-59-70. E-mail: stromizmeritel@rambler.ru

Питатель вибрационный ПВ-0,21



Тип	Размеры, мм			Масса, кг
	A	A1	L	
ПВ 0,21/1,0	1000	860	1330	122
ПВ 0,21/1,3	1300	1060	1630	130
ПВ 0,21/1,6	1600	1260	1930	138

- | | |
|--|-------------------------|
| ① Подвеска | ④ Канат страховочный |
| ② Труба транспортировочная | ⑤ Хомут |
| ③ Вибратор электромеханический 50Hz ЗРН
MVE 400/15 230/400V | ⑥ Шайба ограничительная |

STROMIZMERITEL

34-A, Sovnarkomovskaya Str., Nizhny Novgorod, 603086, Russia
 Phone./Fax: +7 (831) 435-13-70, 8 (800) 550-59-70. E-mail: stromizmeritel@rambler.ru

СТРОМИ
 www.stromi-nn.ru

PIPED VIBRATORY FEEDER

PV – 0,335

APPLICATION

Vibratory feeder of PV series is designed for supply of free-flowing fine-grained and lump non-caking and non-sticking materials with mesh size up to 20 mm with bulk density up to 2 g/sm³ in workshops at environmental air temperature of -30° to +50°.

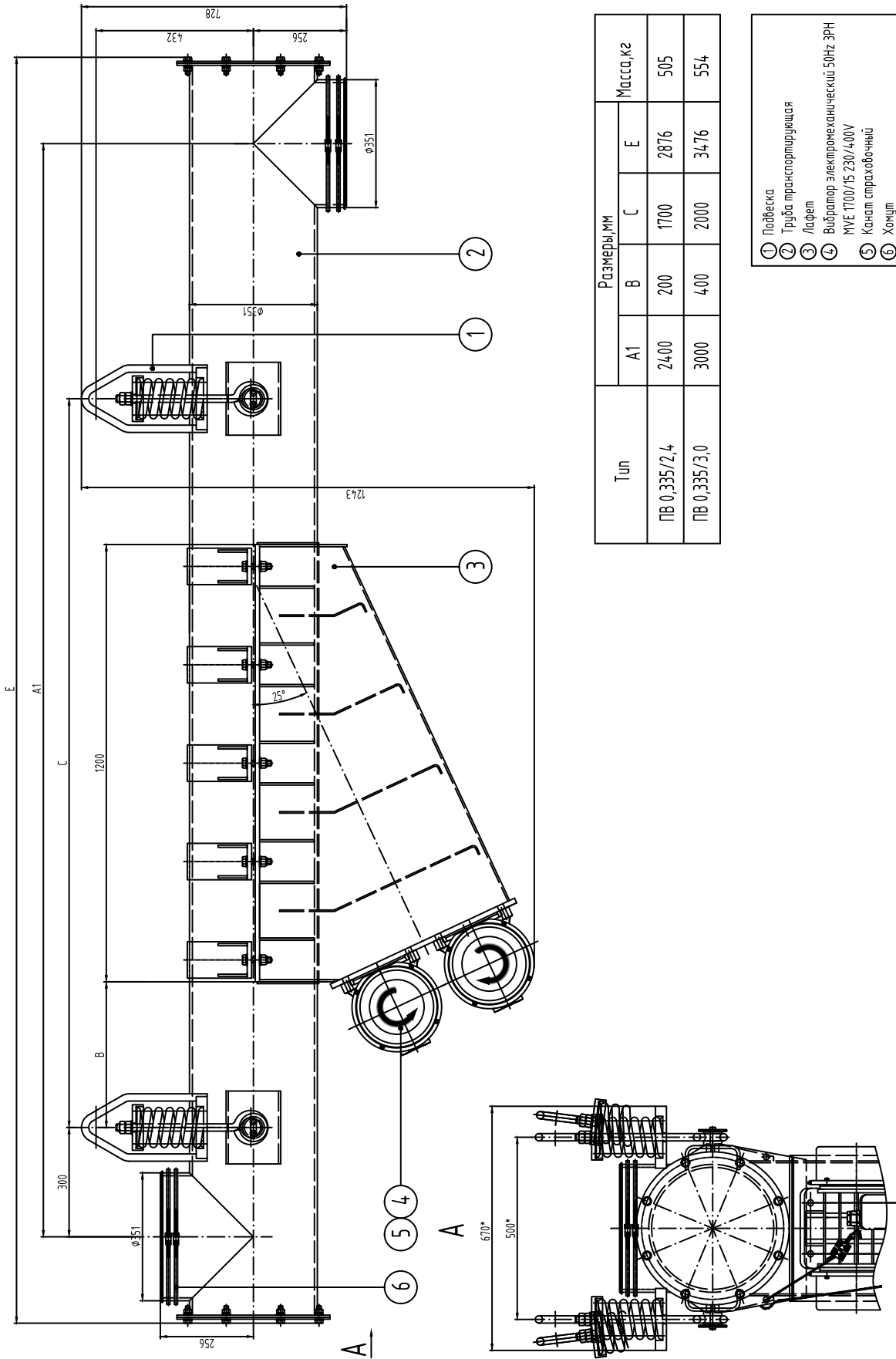
BASIC TECHNICAL SPECIFICATIONS

Parameters	Nominal values		
	PV-0,21/1,0	PV-0,21/1,3	PV-0,21/1,6
Conveying pipe inner diameter , mm	210		
Spacing between centers of loading and unloading part , mm	1000	1300	1600
Output (in sand $\gamma=1,5\tau/\text{m}^3$), m ³ /h with installation of balance weight on 80%	20		
Electromechanical vibrator type, V	MVE 400/15 "OLI" Wamgroup 50Hz, 3 stage, 1500 rotations/min		
Power supply voltage , V	380±38		
Number of vibrators	2		
Rated input, kW	2*0,3		
Dimensions (LxWxH), mm	1330*650*508	1630*650*508	1930*650*508
Weight, kg, max	122	130	138

STROMIZMERITEL

34-A, Sovnarkomovskaya Str., Nizhny Novgorod, 603086, Russia
Phone./Fax: +7 (831) 435-13-70, 8 (800) 550-59-70. E-mail: stromizmeritel@rambler.ru

Питатель вибрационный ПВ-0,335



STROMIZMERITEL

34-A, Sovnarkomovskaya Str., Nizhny Novgorod, 603086, Russia
 Phone./Fax: +7 (831) 435-13-70, 8 (800) 550-59-70. E-mail: stromizmeritel@rambler.ru



www.stromi-nn.ru

TWO-WAY DIVERTER

PR-400LF

APPLICATION

Two-way diverter (PR) is designed for changing direction of free-flowing material. There are two ways to operate such system: hand or automatic operating system.

Conditions of two-way diverter operation:

-Parameters of temperature are mentioned in the table.

-Relative air humidity, %.....90 (t=25°C)

-Atmosphere pressure, kPa (mm Hg),.....84-106,7 (630-800)

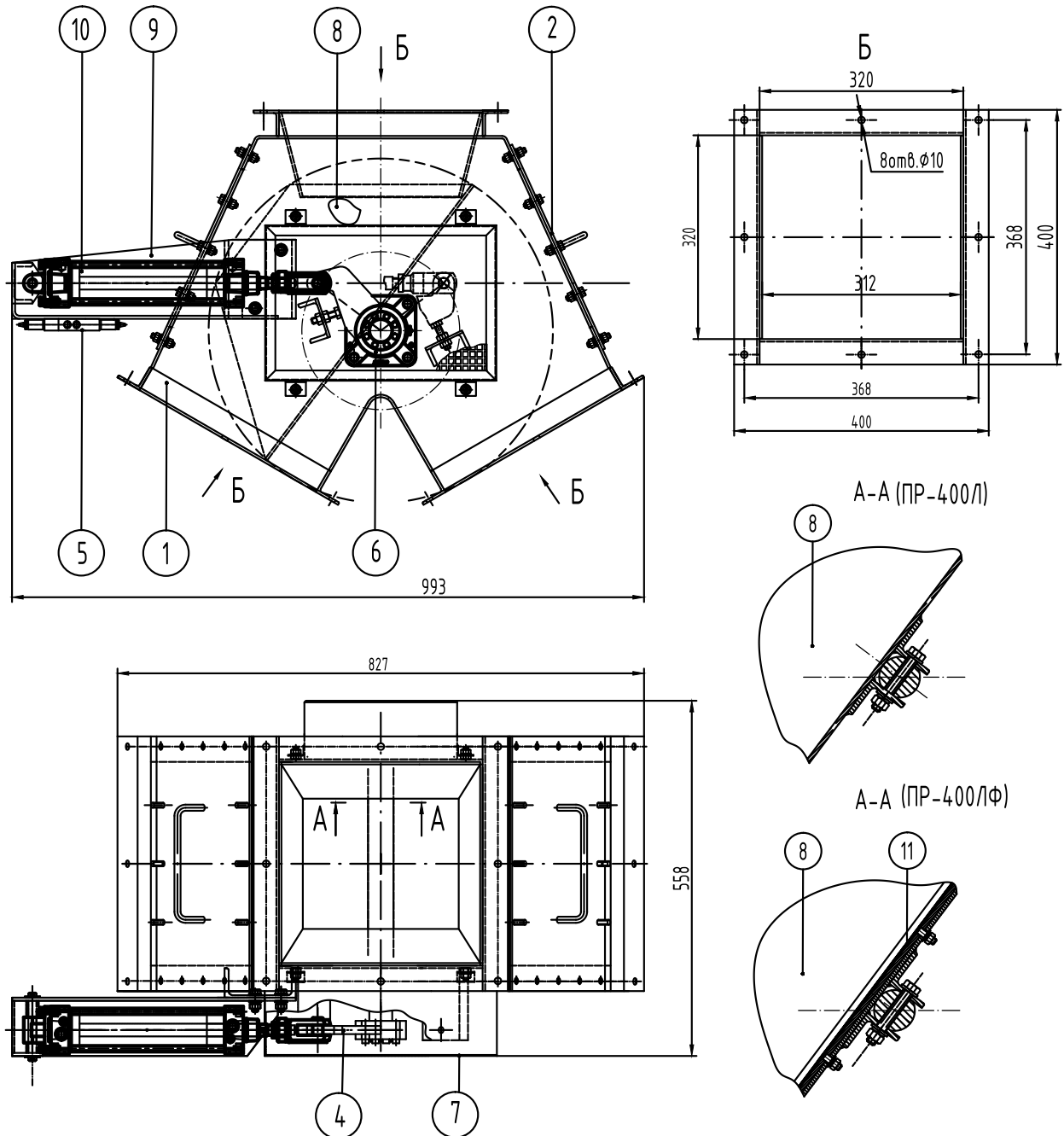
BASIC TECHNICAL SPECIFICATIONS

Parameters	PR-400L	PR-400LF
Nominal bore , mm	400*400	
Handling	Electro pneumatic	
Pneumatic feeding from power network , with pressure , MPa	0,5±0,1	
Air output *, m ³ /min	0,701	
Volume of air during one cycle of operation (2c), m ³	0,0167	
Requirements for cleaning and dryin g of stored air to GOST 17433-80, class	7	
Pneumatic piston diameter , mm	80	
Cylinder rod stroke , mm	250	
Electric feeding from AC network with voltage , V Power frequency , Hz	220±22 50±1	
Protection degree of electrical equipment	IP54	
Power , W	7,5	
Weight, kg, max	73	90
Ambient temperature , °C	-30... +40	

STROMIZMERITEL

34-A, Sovnarkomovskaya Str., Nizhny Novgorod, 603086, Russia
Phone./Fax: +7 (831) 435-13-70, 8 (800) 550-59-70. E-mail: stromizmeritel@rambler.ru

Переключатель рукавный ПР-400ЛФ



- | | |
|------------------------|--------------------------|
| ① Корпус | ⑦ Кожух |
| ② Крышка | ⑧ Лоток в сборе с валом |
| ④ Рычаг | ⑨ Кронштейн |
| ⑤ Пневмораспределитель | ⑩ Цилиндр пневматический |
| ⑥ Опора подшипниковая | ⑪ Панель футеровочная |

STROMIZMERITEL

34-A, Sovnarkomovskaya Str., Nizhny Novgorod, 603086, Russia
 Phone./Fax: +7 (831) 435-13-70, 8 (800) 550-59-70. E-mail: stromizmeritel@rambler.ru

TWO-WAY DIVERTER

PR-500

APPLICATION

Two-way diverter (PR) is designed for changing direction of free-flowing material. There are two ways to operate such system: hand or automatic operating system.

Conditions of two-way diverter operation:

-Parameters of temperature are mentioned in the table.

-Relative air humidity, %.....90 (t=25°C)

-Atmosphere pressure, kPa (mm Hg),.....84-106,7 (630-800)

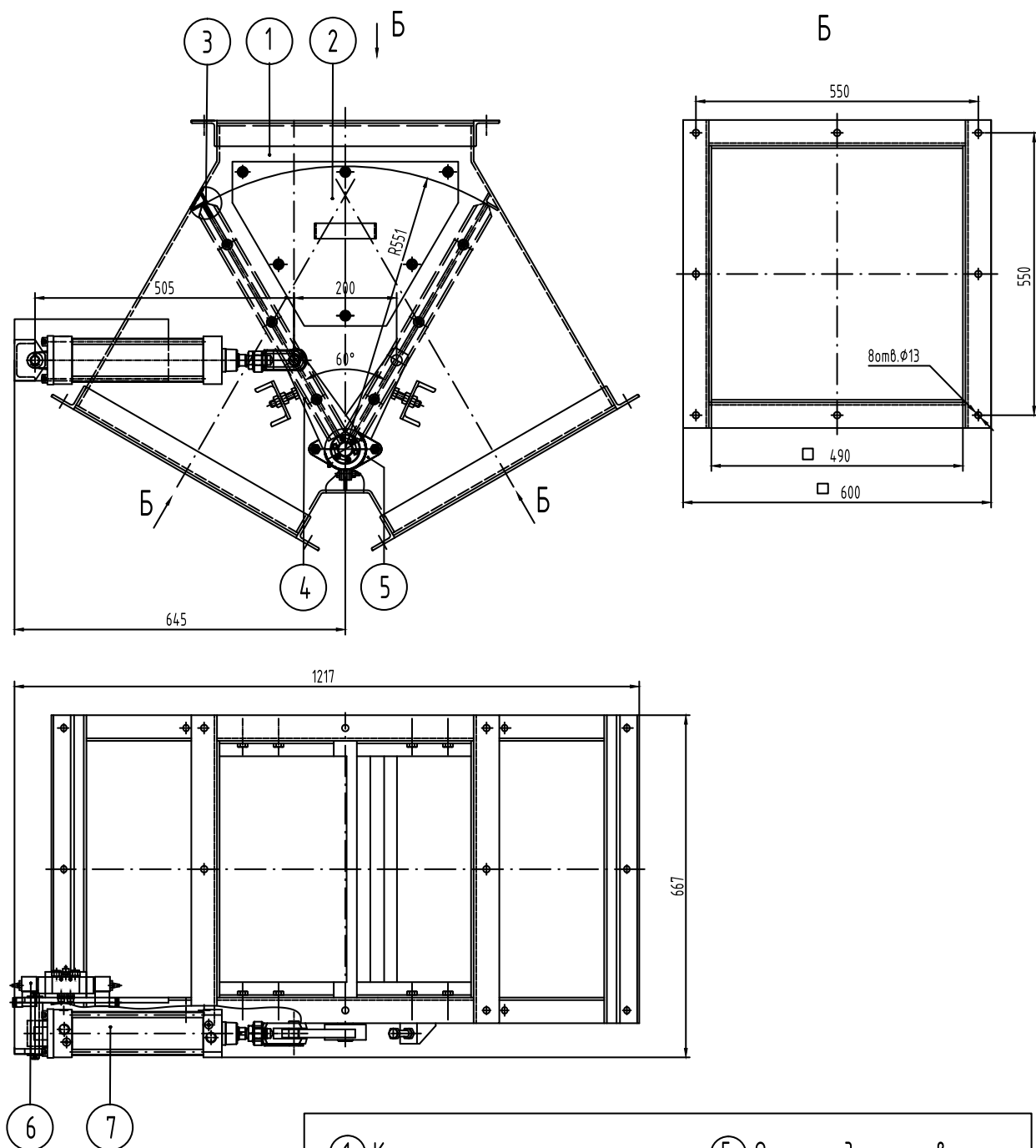
BASIC TECHNICAL SPECIFICATIONS

Parameters	Nominal values
Nominal bore , mm	500x500
Handling	Electro pneuma tic
Pneumatic feeding from power network , with pressure, MPa	0,5±0,1
Air output *, m ³ /min	0,2
Volume of air during one cycle of operation (2c), m ³	0,01
Requirements for cleaning and drying of stored air to GOST 17433-80, class	7
Pneumatic piston di ameter , mm	80
Cylinder rod stroke , mm	200
Existence of blade liners for additional protection of abrasive wear	no
Electric feeding from AC network with voltage , V Power frequency , Hz	220±22 50±1
Protection degree of electrical equipment	IP54
Power , W	7,5
Weight , kg, max	145
Ambient temperature , °C	-20... +40

STROMIZMERITEL

34-A, Sovnarkomovskaya Str., Nizhny Novgorod, 603086, Russia
Phone./Fax: +7 (831) 435-13-70, 8 (800) 550-59-70. E-mail: stromizmeritel@rambler.ru

Переключатель рукавный ПР-500



- | | |
|----------|--------------------------|
| ① Корпус | ⑤ Опора подшипниковая |
| ② Крышка | ⑥ Пневмораспределитель |
| ③ Планка | ⑦ Цилиндр пневматический |
| ④ Рычаг | |

STROMIZMERITEL

34-A, Sovnarkomovskaya Str., Nizhny Novgorod, 603086, Russia
 Phone./Fax: +7 (831) 435-13-70, 8 (800) 550-59-70. E-mail: stromizmeritel@rambler.ru

TWO-WAY DIVERTER

PR-500LF

APPLICATION

Two-way diverter (PR) is designed for changing direction of free-flowing material. There are two ways to operate such system: hand or automatic operating system.

Conditions of two-way diverter operation:

-Parameters of temperature are mentioned in the table.

-Relative air humidity, %.....90 (t=25°C)

-Atmosphere pressure, kPa (mm Hg),.....84-106,7 (630-800)

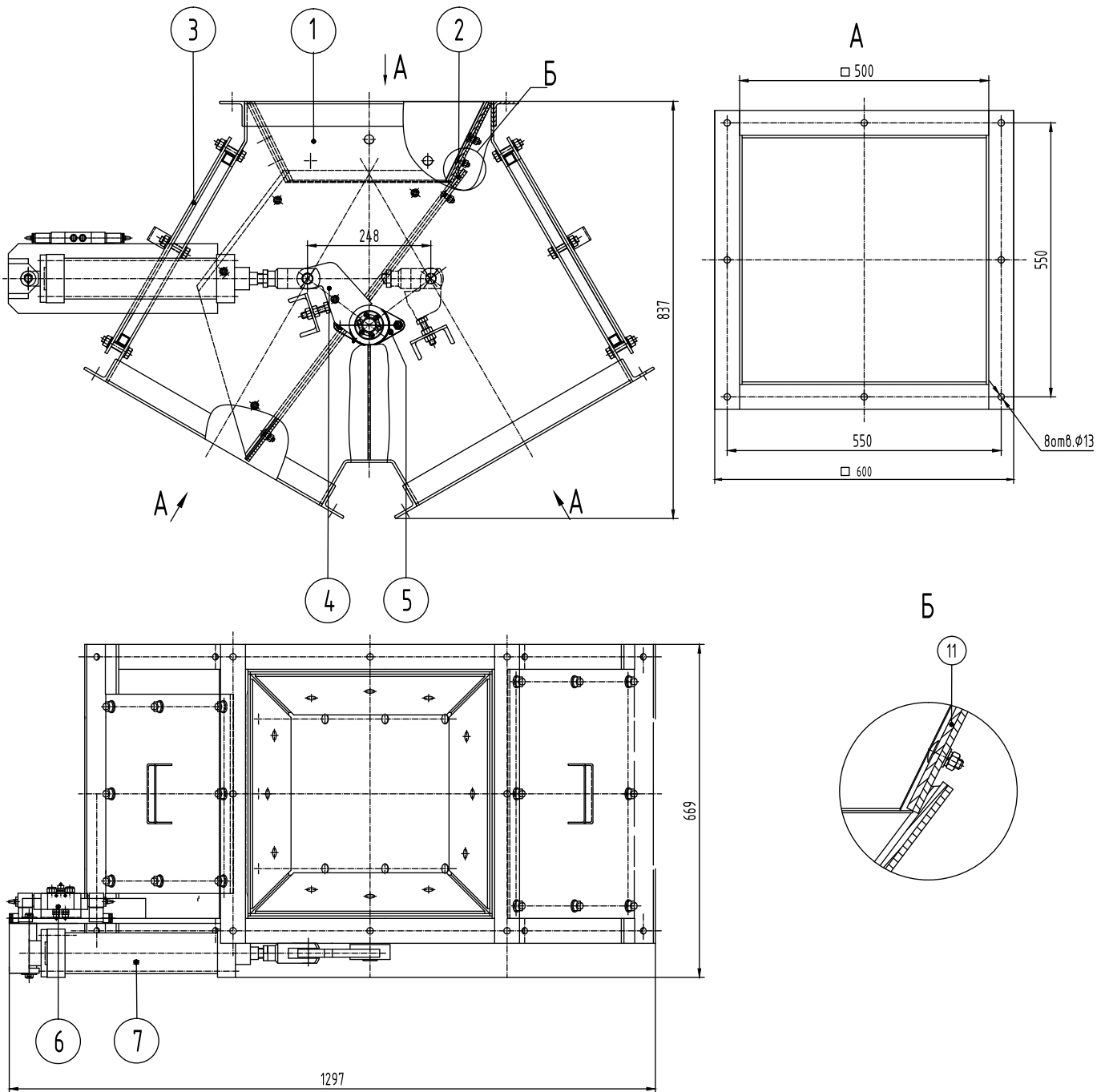
BASIC TECHNICAL SPECIFICATIONS

Parameters	Nominal values
Nominal bore , mm	500x500
Handling	Electro pneuma tic
Pneumatic feeding from power network , with pressure, MPa	0,5±0,1
Air output *, m ³ /min	0,701
Volume of air during one cycle of operation (2c), m ³	0,0167
Requirements for cleaning and drying of stored air to GOST 17433-80, class	7
Pneumatic piston diamet er, mm	80
Cylinder rod stroke , mm	250
Existence of blade liners for additional protection of abrasive wear	yes
Electric feeding from AC network with voltage , V Power frequency , Hz	220±22 50±1
Protection degree of electrical equipment	IP54
Power , W	7,5
Weight, kg, max	85
Ambient temperature , °C	-30... +40

STROMIZMERITEL

34-A, Sovnarkomovskaya Str., Nizhny Novgorod, 603086, Russia
Phone./Fax: +7 (831) 435-13-70, 8 (800) 550-59-70. E-mail: stromizmeritel@rambler.ru

Переключатель рукавный ПР-500ЛФ



- | | |
|----------|--------------------------|
| ① Корпус | ⑤ Опора подшипниковая |
| ② Лоток | ⑥ Пневмораспределитель |
| ③ Крышка | ⑦ Цилиндр пневматический |
| ④ Рычаг | ⑧ Панель футеровочная |

STROMIZMERITEL

34-A, Sovnarkomovskaya Str., Nizhny Novgorod, 603086, Russia
 Phone./Fax: +7 (831) 435-13-70, 8 (800) 550-59-70. E-mail: stromizmeritel@rambler.ru

PNEUMATIC ACTIVATOR

PP-40

APPLICATION

Pneumatic activator is designed for reproduction of sharp blow to the walls of storage hopper, when the material sticks or hangs in the hopper.

Conditions of pneumatic activator operation:

-Ambient temperature, °C +5...+40

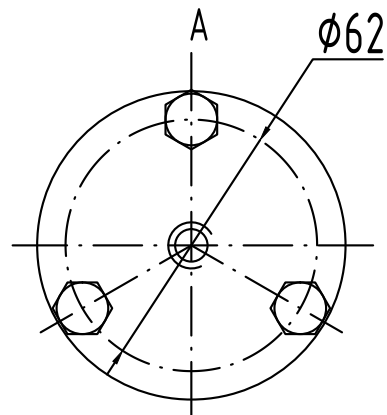
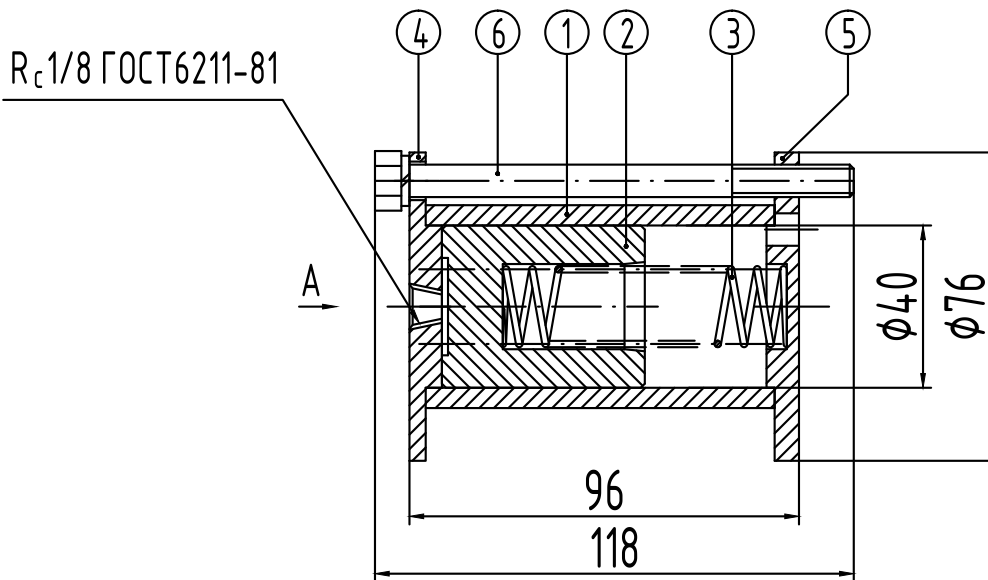
-Relative air humidity, %.....90 (t=25°C)

-Atmosphere pressure, kPa (mm Hg),.....84-106,7 (630-800)

BASIC TECHNICAL SPECIFICATIONS

Parameters	Nominal values
Piston diameter , mm	40
Piston distance , mm	30
Handling	pneumatic
Pneumatic feeding from power network with pressure , MPa	0,5±0,1
Air output *, m ³ /min	0,252
Volume of air during one cycle of operation (0,1c), m ³	0,0003
Striking energy , J	17,2
Requirements for cleaning and drying stored air to GOST 17433-80, class	7
Weight, kg, max	1,12
Ambient temperature , °C	+5... +40

Пневмопобудитель ПП-40



- | | |
|---|----------------|
| ① | Гильза |
| ② | Поршень |
| ③ | Пружина |
| ④ | Фланец верхний |
| ⑤ | Фланец нижний |
| ⑥ | Болт |

PNEUMATIC ACTIVATOR

PP-63

APPLICATION

Pneumatic activator is designed for reproduction of sharp blow to the walls of storage hopper, when the material sticks or hangs in the hopper.

Conditions of pneumatic activator operation:

-Ambient temperature, °C +5...+40

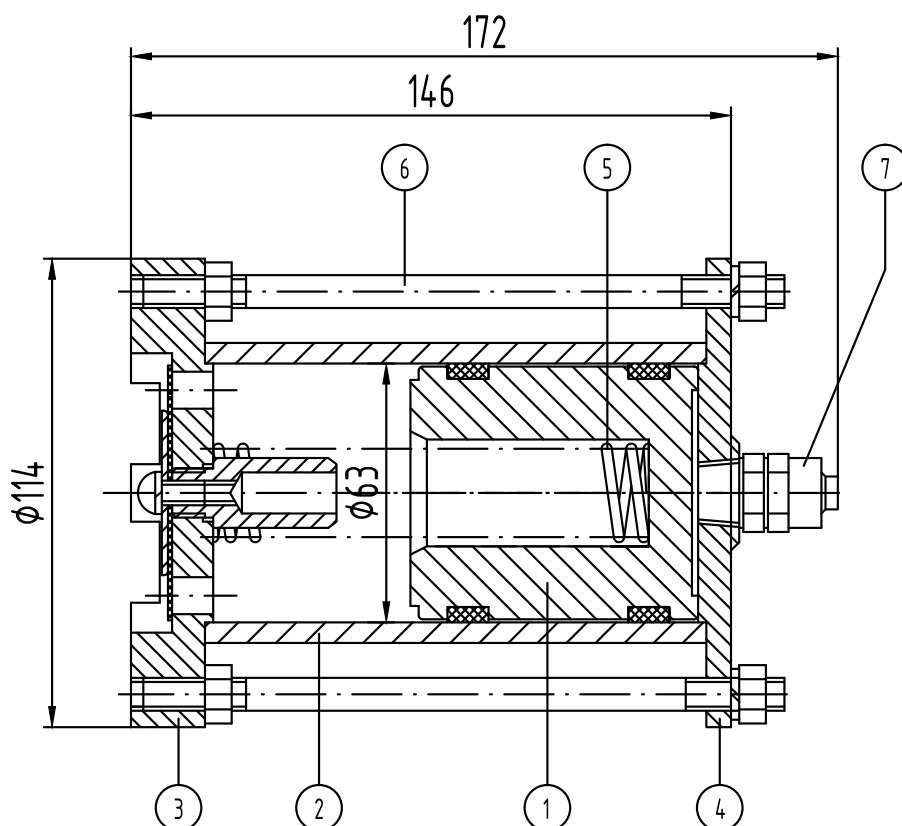
-Relative air humidity, %.....90 (t=25°C)

-Atmosphere pressure, kPa (mm Hg),.....84-106,7 (630-800)

BASIC TECHNICAL SPECIFICATIONS

Parameters	Nominal values
Piston diameter , mm	63
Piston distance , mm	50
Handling	pneumatic
Pneumatic feeding from power network with pressure , MPa	0,5±0,1
Air output *, m ³ /min	0,84
Volume of air during one cycle of operation (0,1c), m ³	0,001
Striking energy , J	67,5
Requirements for cleaning and drying stored air to GOST 17433-80, class	7
Weight, kg, max	2,85
Ambient temperature , °C	+5... +40

Пневмопобудитель ПП-63



- | | | | |
|---|----------------|---|-----------------|
| ① | Поршень | ⑤ | Пружина |
| ② | Гильза | ⑥ | Шпилька стяжная |
| ③ | Фланец нижний | ⑦ | Штуцер |
| ④ | Фланец верхний | | |

STROMIZMERITEL

34-A, Sovnarkomovskaya Str., Nizhny Novgorod, 603086, Russia
 Phone./Fax: +7 (831) 435-13-70, 8 (800) 550-59-70. E-mail: stromizmeritel@rambler.ru

СТРОМИ
 www.stromi-nn.ru

PNEUMATIC HAMMER

PM-125

APPLICATION

Pneumatic hammer is designed for reproduction of sharp blow to the walls of storage hopper, when the material sticks or hangs in the hopper.

Conditions of pneumatic activator operation:

-Ambient temperature, °C +5...+40

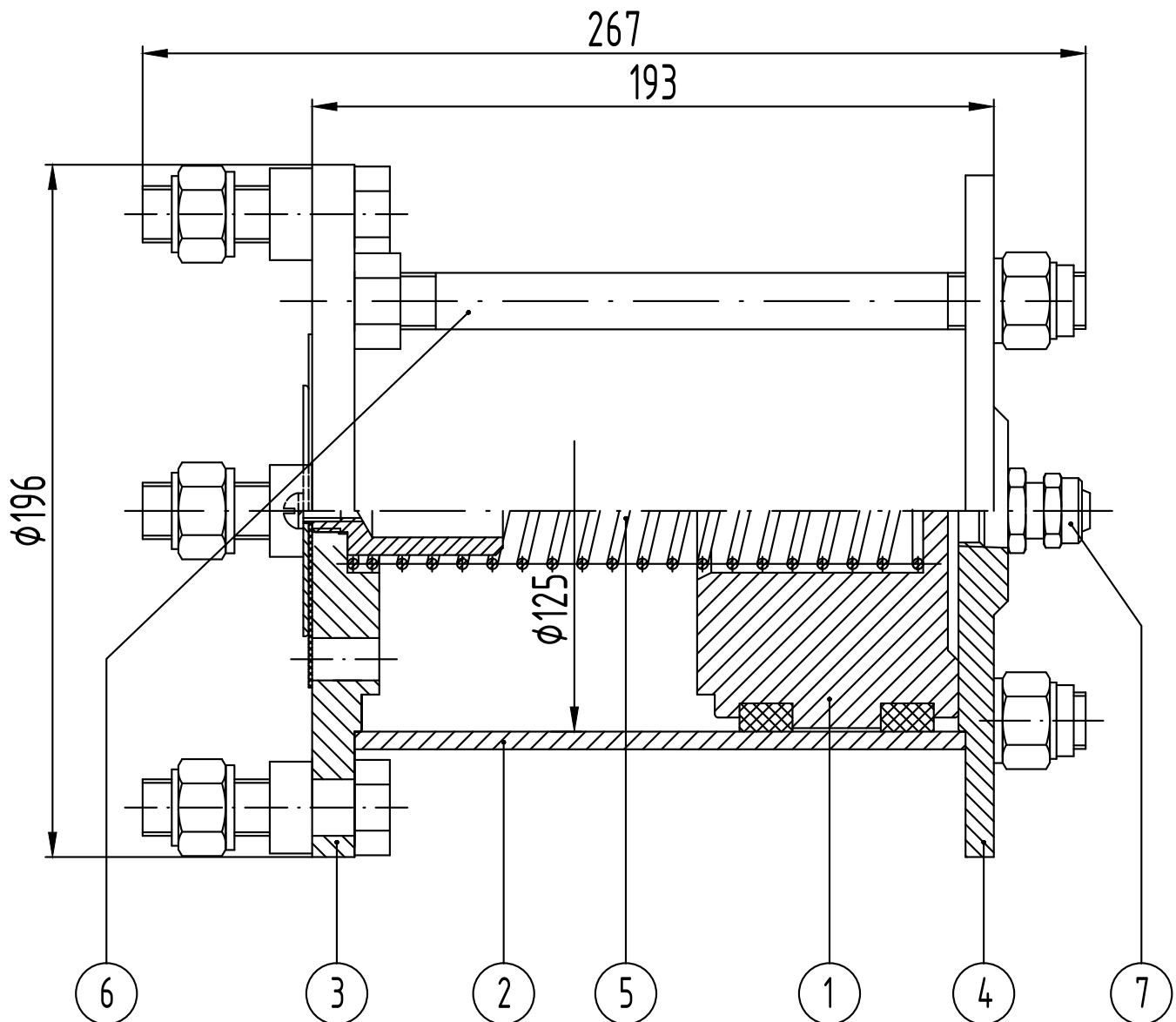
-Relative air humidity, %.....90 (t=25°C)

-Atmosphere pressure, kPa (mm Hg),.....84-106,7 (630-800)

BASIC TECHNICAL SPECIFICATIONS

Parameters	Nominal values
Handling	Electro pneumatic
Pneumatic feeding from power network , MPa	0,5±0,1
Air output , m ³ /min	3,72
Volume of air during one cycle of operation (0,1 sec.), m ³	6,2
Striking energy , J	270
Requirements for cleaning and drying stored air to GOST 17433-80, class	7
Electric feeding from power network with voltage , V	220 ±22
Power , W	12,7
Piston diameter , mm	125
Piston distance , mm	100
Weight , kg, max	6,3

Пневмомолоток ПМ-125



- | | | | |
|---|----------------|---|-----------------|
| ① | Поршень | ⑤ | Пружина |
| ② | Гильза | ⑥ | Шпилька стяжная |
| ③ | Фланец нижний | ⑦ | Штуцер |
| ④ | Фланец верхний | | |

STROMIZMERITEL

34-A, Sovnarkomovskaya Str., Nizhny Novgorod, 603086, Russia
 Phone./Fax: +7 (831) 435-13-70, 8 (800) 550-59-70. E-mail: stromizmeritel@rambler.ru

СТРОМИ
 www.stromi-nn.ru